

# \$625,000 - 403 9232 University Crescent, Burnaby

MLS® #R2993881

**\$625,000**

2 Bedroom, 1.00 Bathroom, 811 sqft

Single Family

N/A, Burnaby, British Columbia

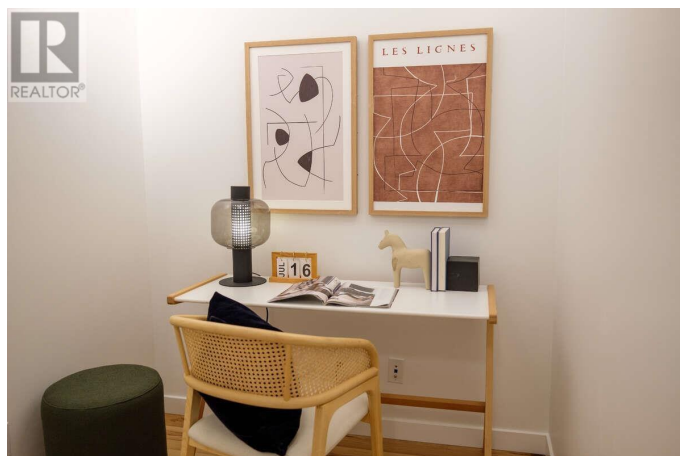
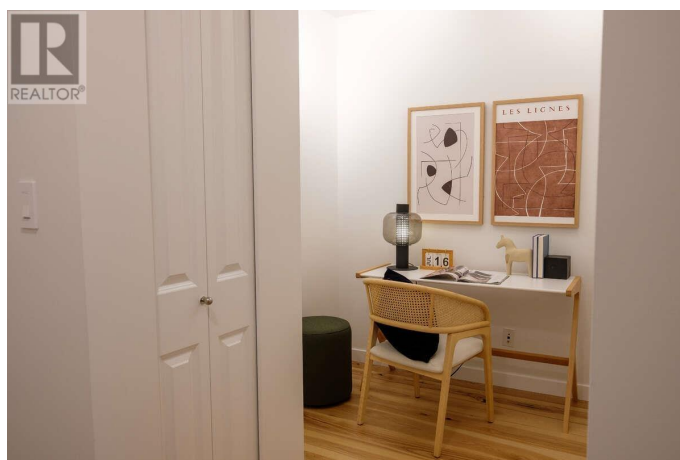
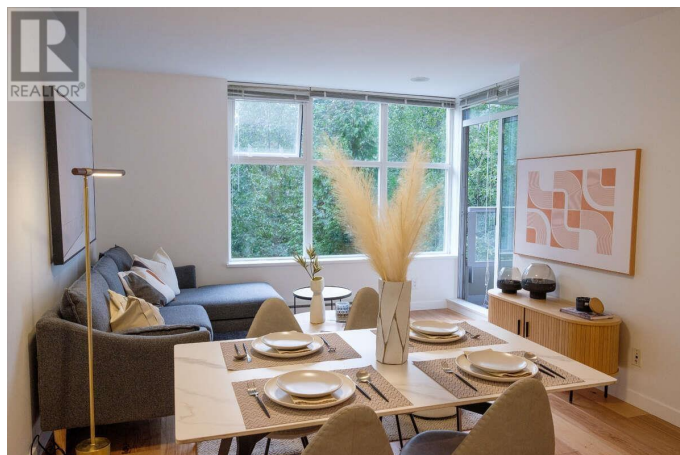
For more information, please click Brochure button. NOVO 2 North Tower, a well-managed concrete building. This move in ready, 811 sqft NW facing unit features an open-concept living area, in-suite laundry, and 1 parking stall next to the elevator. The 18' long balcony offers a perfect spot to unwind, where you can enjoy peekaboo views of the surrounding mountains. Freshly painted with smooth ceilings and upgraded hickory engineered wood flooring for a warm, "cottage-in-the-woods" ambiance. Close to hiking trails, grocery store, post office, elementary school, shops, restaurants, public transit, and SFU campus. Easy access to Hwy 1. Perfect for a young family or down-sizers looking for a balance between tranquility and urban convenience. (id:36535)

Built in 2006

## Essential Information

Listing #	R2993881
Price	\$625,000
Bedrooms	2
Bathrooms	1.00
Square Footage	811
Year Built	2006
Type	Single Family
Sub-Type	Leasehold Condo/Strata

## Community Information



Address	403 9232 University Crescent
Subdivision	N/A
City	Burnaby
Province	British Columbia
Postal Code	V5A0A3

### Amenities

Amenities	Playground, Recreation, Shopping, Exercise Centre, Laundry - In Suite
Features	Elevator, Wheelchair access
Parking Spaces	1
Parking	Underground, Visitor Parking

### Interior

Interior Features	Drapes/Window coverings
Appliances	All, Intercom
Heating	Electric Baseboard heaters

### Exterior

Exterior Features	Garden Area
-------------------	-------------

### Listing Details

Listing Office	Courtesy Of Darya Pfund Of Easy List Realty
----------------	---



The trademarks MLS®, Multiple Listing Service® and the associated logos are owned by The Canadian Real Estate Association (CREA) and identify the quality of services provided by real estate professionals who are members of CREA. REALTOR®. Member of CREA and more.

Listing information last updated on May 16th, 2025 at 9:17pm MDT