

\$254,900 - 311, 103 Strathaven Drive, Strathmore

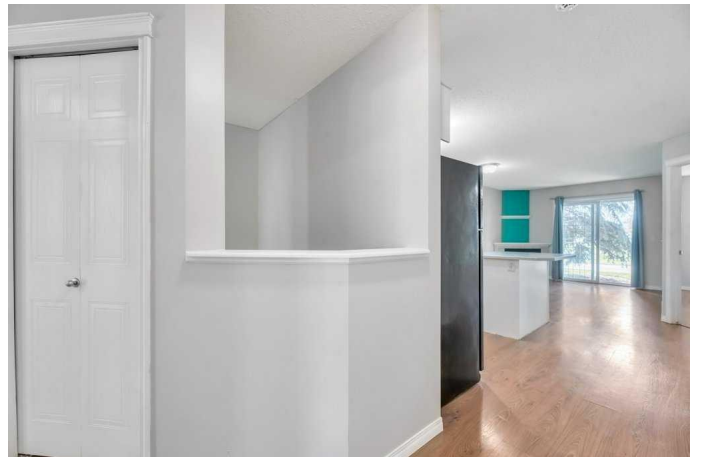
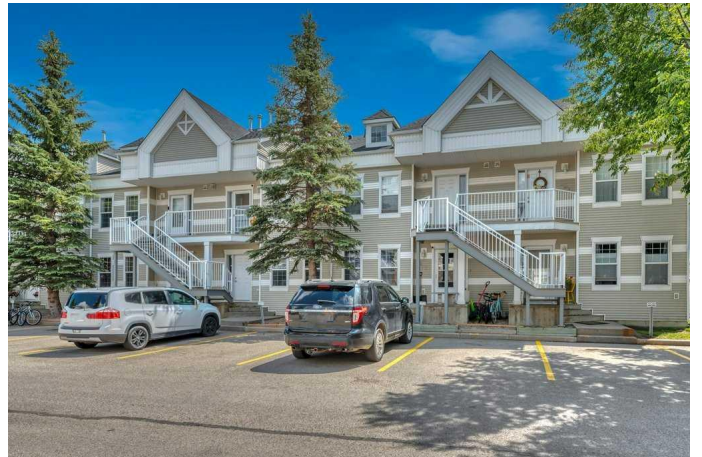
MLS® #A2246447

\$254,900

3 Bedroom, 2.00 Bathroom, 889 sqft
Residential on 0.02 Acres

Strathaven, Strathmore, Alberta

Strathmore townhouse living surrounded by green space. Set in a well-managed complex (including a new roof and siding) and surrounded by peaceful green space, this spacious townhouse blends comfort and function. The main floor features two bedrooms plus a versatile flex/den room, along with a full bathroom that includes a cheater door for convenient ensuite access. The modern kitchen offers a functional island, stainless steel appliances (fridge excluded), and opens into the bright living room with a cozy gas fireplace. Patio doors lead to a concrete pad—perfect for enjoying the afternoon sun. The fully developed lower level offers a large open rec space that could easily be converted to add a third bedroom, plus a second full bathroom—ideal for guests or family. Two dedicated parking spots are located directly out the front door for ultimate convenience. With water included in the condo fees, and the hospital, park, and schools just minutes away, this home delivers comfort, value, and a fantastic location.



Built in 2002

Essential Information

MLS® #	A2246447
Price	\$254,900
Bedrooms	3
Bathrooms	2.00

Full Baths	2
Square Footage	889
Acres	0.02
Year Built	2002
Type	Residential
Sub-Type	Row/Townhouse
Style	Bungalow
Status	Active

Community Information

Address	311, 103 Strathaven Drive
Subdivision	Strathaven
City	Strathmore
County	Wheatland County
Province	Alberta
Postal Code	T1P 1W3

Amenities

Amenities	Parking, Snow Removal, Visitor Parking
Parking Spaces	2
Parking	Stall

Interior

Interior Features	Kitchen Island, Laminate Counters
Appliances	Dishwasher, Dryer, Electric Stove, Range Hood, Refrigerator, Washer, Window Coverings
Heating	Forced Air
Cooling	None
Fireplace	Yes
# of Fireplaces	1
Fireplaces	Gas
Has Basement	Yes
Basement	Finished, Full

Exterior

Exterior Features	Other
Lot Description	Landscaped
Roof	Asphalt Shingle
Construction	Vinyl Siding, Wood Frame

Foundation Poured Concrete

Additional Information

Date Listed August 8th, 2025

Days on Market 8

Zoning R3

Listing Details

Listing Office RE/MAX Key

Data is supplied by Pillar 9â„¸ MLSÂ® System. Pillar 9â„¸ is the owner of the copyright in its MLSÂ® System. Data is deemed reliable but is not guaranteed accurate by Pillar 9â„¸. The trademarks MLSÂ®, Multiple Listing ServiceÂ® and the associated logos are owned by The Canadian Real Estate Association (CREA) and identify the quality of services provided by real estate professionals who are members of CREA. Used under license.