

\$117,000 - 2208, 7201 Poplar Drive, Grande Prairie

MLS® #A2231653

\$117,000

0 Bedroom, 1.00 Bathroom, 487 sqft

Residential on 0.00 Acres

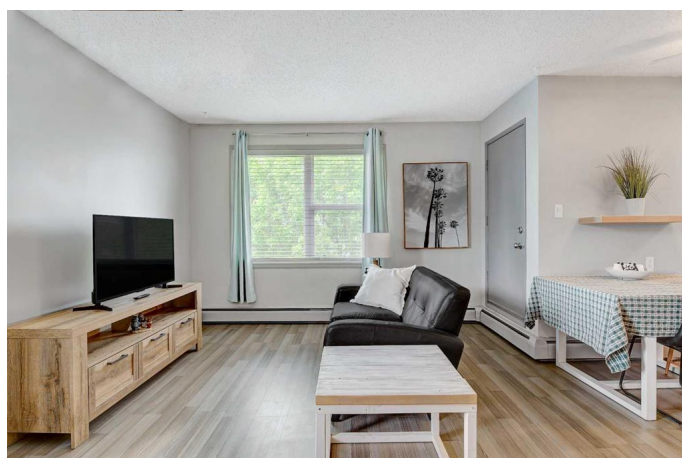
South Patterson Place, Grande Prairie, Alberta

Modern Bachelor Suite with West-Facing Patio. This updated top-floor corner unit bachelor suite offers both comfort and convenience in a well-maintained building. Fully furnished – right down to the pots and pans – it's truly move-in ready! Enjoy laminate flooring throughout, a well-equipped kitchen featuring a fridge, stove, and microwave rangehood, plus in-suite laundry with a washer and dryer. Relax on your west-facing patio, perfect for catching the evening sun. You'll love the abundant in-suite storage, rare for units of this size. Condo fees are a low \$263/month, and parking stall #82 is included. Ideal for first-time buyers, students, investors looking for a turnkey rental opportunity or your home away from home. Call to view today!

Built in 1981

Essential Information

MLS® #	A2231653
Price	\$117,000
Bathrooms	1.00
Full Baths	1
Square Footage	487
Acres	0.00
Year Built	1981
Type	Residential



Sub-Type	Apartment
Style	Loft
Status	Active

Community Information

Address	2208, 7201 Poplar Drive
Subdivision	South Patterson Place
City	Grande Prairie
County	Grande Prairie
Province	Alberta
Postal Code	T8V 6C5

Amenities

Amenities	Parking, Visitor Parking, Snow Removal, Trash
Parking Spaces	1
Parking	Stall

Interior

Interior Features	Open Floorplan
Appliances	See Remarks
Heating	Baseboard
Cooling	None
# of Stories	3

Exterior

Exterior Features	Balcony
Construction	Wood Frame

Additional Information

Date Listed	June 16th, 2025
Days on Market	62
Zoning	RM

Listing Details

Listing Office	Century 21 Grande Prairie Realty Inc.
----------------	---------------------------------------

Data is supplied by Pillar 9â„¢ MLS® System. Pillar 9â„¢ is the owner of the copyright in its MLS® System. Data is deemed reliable but is not guaranteed accurate by Pillar 9â„¢. The trademarks MLS®, Multiple Listing Service® and the associated logos are owned by The Canadian Real Estate Association (CREA) and identify the quality of services provided by real estate professionals who are members of CREA. Used under license.