

\$250,000 - 4 Swfit Crescent, Jasper

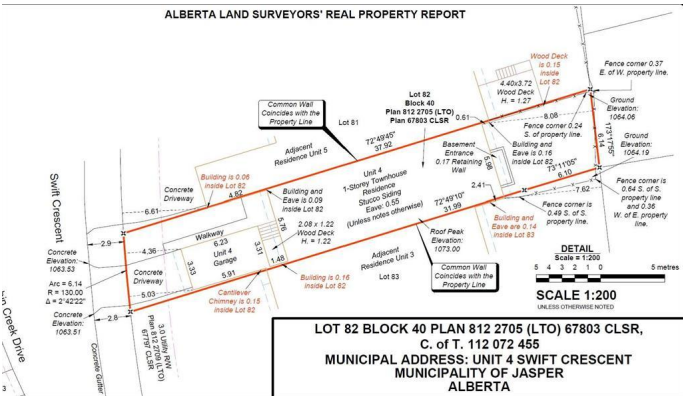
MLS® #A2231313

\$250,000

0 Bedroom, 0.00 Bathroom,
Land on 0.06 Acres

Jasper, Jasper, Alberta

Land Only - Opportunity to build your dream home in Cabin Creek district of Jasper Townsite. This lot is 2505 sq ft and is zoned CCWc District. After the wildfire, zoning now has key changes with a list of permitted uses in the CCWc Distrist of: Row Houses, One Unit Dwelling (detached), Two Unit Dwelling (detached), Garages Attached to the Primary Building, Secondary Suites within a Primary Residence. Definitions of permitted uses are in Jasper Land Use Policy. At time of closing all debris will be removed & proper documentation provided.



Essential Information

| | |
|-----------|------------------|
| MLS® # | A2231313 |
| Price | \$250,000 |
| Bathrooms | 0.00 |
| Acres | 0.06 |
| Type | Land |
| Sub-Type | Residential Land |
| Status | Active |

Community Information

| | |
|-------------|----------------------|
| Address | 4 Swfit Crescent |
| Subdivision | Jasper |
| City | Jasper |
| County | Jasper, Municipality |
| Province | Alberta |
| Postal Code | T0E 1E0 |

Additional Information

| | |
|----------------|-----------------|
| Date Listed | June 12th, 2025 |
| Days on Market | 61 |
| Zoning | CCWc |

Listing Details

| | |
|----------------|--------------------|
| Listing Office | JASPER REAL ESTATE |
|----------------|--------------------|

Data is supplied by Pillar 9â„¢ MLS® System. Pillar 9â„¢ is the owner of the copyright in its MLS® System. Data is deemed reliable but is not guaranteed accurate by Pillar 9â„¢. The trademarks MLS®, Multiple Listing Service® and the associated logos are owned by The Canadian Real Estate Association (CREA) and identify the quality of services provided by real estate professionals who are members of CREA. Used under license.