

# \$519,900 - 52005 Twp Rd 443, Rural Wainwright No. 61, M.D. of

---

MLS® #A2231008

**\$519,900**

4 Bedroom, 2.00 Bathroom, 1,450 sqft  
Residential on 26.19 Acres

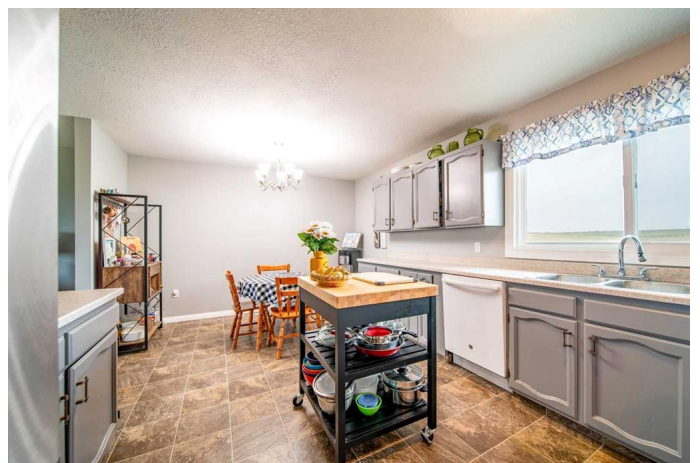
NONE, Rural Wainwright No. 61, M.D. of,  
Alberta

Country Living Just 15 Minutes from Wainwright! Discover the perfect blend of space, privacy, and convenience with this well-kept 1450 sq. ft. bungalow situated on 26.19 beautifully treed acres with plenty of pasture. This charming home offers comfortable main floor living with a spacious layout, ideal for families or those looking to enjoy country life close to town. New furnace and central air recently installed. Outside, you'll find a new 28' x 30' detached heated garage with soaring 16 ft ceilings—perfect for storing large equipment, working on projects, or housing recreational vehicles. The yard is nicely maintained, offering plenty of space to garden, play, or simply relax and take in the peaceful surroundings. Whether you're looking to escape the city, start a hobby farm, or just enjoy wide open spaces, this property delivers on all fronts—a rare opportunity only 15 minutes from Wainwright!

Built in 1972

## Essential Information

MLS® #	A2231008
Price	\$519,900
Bedrooms	4
Bathrooms	2.00



Full Baths	1
Half Baths	1
Square Footage	1,450
Acres	26.19
Year Built	1972
Type	Residential
Sub-Type	Detached
Style	Acreage with Residence, Bungalow
Status	Active

### Community Information

Address	52005 Twp Rd 443
Subdivision	NONE
City	Rural Wainwright No. 61, M.D. of
County	Wainwright No. 61, M.D. of
Province	Alberta
Postal Code	T9W 1T2

### Amenities

Parking	Double Garage Detached
# of Garages	2

### Interior

Interior Features	Laminate Counters, Storage, Vinyl Windows
Appliances	Dishwasher, Dryer, Electric Stove, Refrigerator, Washer
Heating	Forced Air, Natural Gas
Cooling	Central Air
Has Basement	Yes
Basement	Full, Unfinished

### Exterior

Exterior Features	Garden, Private Entrance, Private Yard, Rain Gutters
Lot Description	Back Yard, Brush, Front Yard, Irregular Lot, Landscaped, Lawn, Pasture, Secluded
Roof	Asphalt Shingle
Construction	Wood Frame
Foundation	Poured Concrete

### Additional Information

Date Listed	June 13th, 2025
Days on Market	4
Zoning	AG

**Listing Details**

Listing Office	CENTURY 21 CONNECT REALTY
----------------	---------------------------

Data is supplied by Pillar 9â„¢ MLSÂ® System. Pillar 9â„¢ is the owner of the copyright in its MLSÂ® System. Data is deemed reliable but is not guaranteed accurate by Pillar 9â„¢. The trademarks MLSÂ®, Multiple Listing ServiceÂ® and the associated logos are owned by The Canadian Real Estate Association (CREA) and identify the quality of services provided by real estate professionals who are members of CREA. Used under license.