

# \$298,900 - 1412, 1140 Taradale Drive Ne, Calgary

MLS® #A2226090

## \$298,900

2 Bedroom, 2.00 Bathroom, 880 sqft

Residential on 0.00 Acres

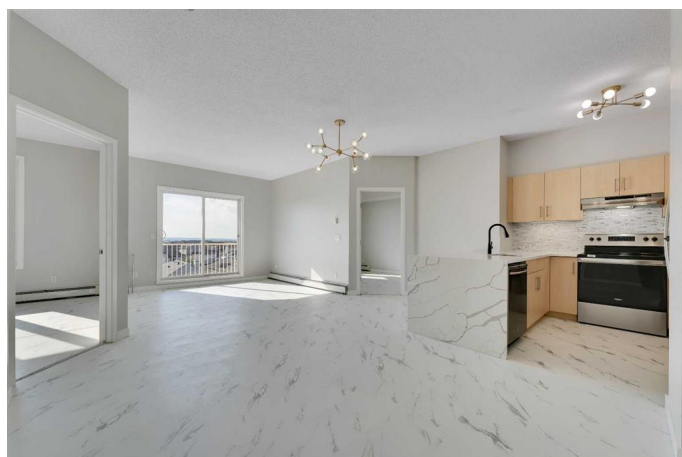
Taradale, Calgary, Alberta

Location!Location! Location! Attention Investors and First-time Buyers! Fully RENOVED!This is an ideal unit for an Investor with Positive Rental Cash Flow or a First Time home buyer. The all-inclusive Condo fee includes Insurance, Electricity, Heat, Water/Sewer, Snow removal, landscaping & building maintenance. With two good-sized bedrooms and two 3-piece bathrooms, this condo offers a GREAT layout. The spacious primary bedroom features a walk-through closet and 3 piece ensuite. The In-suite laundry includes the washer & dryer. This unit is located on the third level with MOUNTAIN VIEW. New washer/dryer, counter top, lights. Close to playground, schools, only minutes to Genesis Center, Saddleridge Circle, Savanna Bazar, LRT Station, Stoney Trail and MORE. Ready for immediate possession. Don't miss this opportunity; call today!

Built in 2007

## Essential Information

MLS® #	A2226090
Price	\$298,900
Bedrooms	2
Bathrooms	2.00
Full Baths	2
Square Footage	880
Acres	0.00



Year Built	2007
Type	Residential
Sub-Type	Apartment
Style	Single Level Unit
Status	Active

### Community Information

Address	1412, 1140 Taradale Drive Ne
Subdivision	Taradale
City	Calgary
County	Calgary
Province	Alberta
Postal Code	T3J 0G1

### Amenities

Amenities	Elevator(s), Park, Parking, Playground, Visitor Parking
Parking Spaces	1
Parking	Stall

### Interior

Interior Features	Open Floorplan
Appliances	Dishwasher, Electric Stove, Microwave Hood Fan, Refrigerator, Washer/Dryer Stacked
Heating	Baseboard
Cooling	Other
# of Stories	4

### Exterior

Exterior Features	Balcony
Construction	Vinyl Siding, Wood Frame

### Additional Information

Date Listed	June 5th, 2025
Days on Market	32
Zoning	M-2

### Listing Details

Listing Office	eXp Realty
----------------	------------

Data is supplied by Pillar 9â„¢ MLS® System. Pillar 9â„¢ is the owner of the copyright in its MLS® System. Data is deemed reliable but is not guaranteed accurate by Pillar 9â„¢. The trademarks MLS®, Multiple Listing Service® and

the associated logos are owned by The Canadian Real Estate Association (CREA) and identify the quality of services provided by real estate professionals who are members of CREA. Used under license.