

# \$249,900 - 224 2 Avenue Ne, Slave Lake

---

MLS® #A2216677

## \$249,900

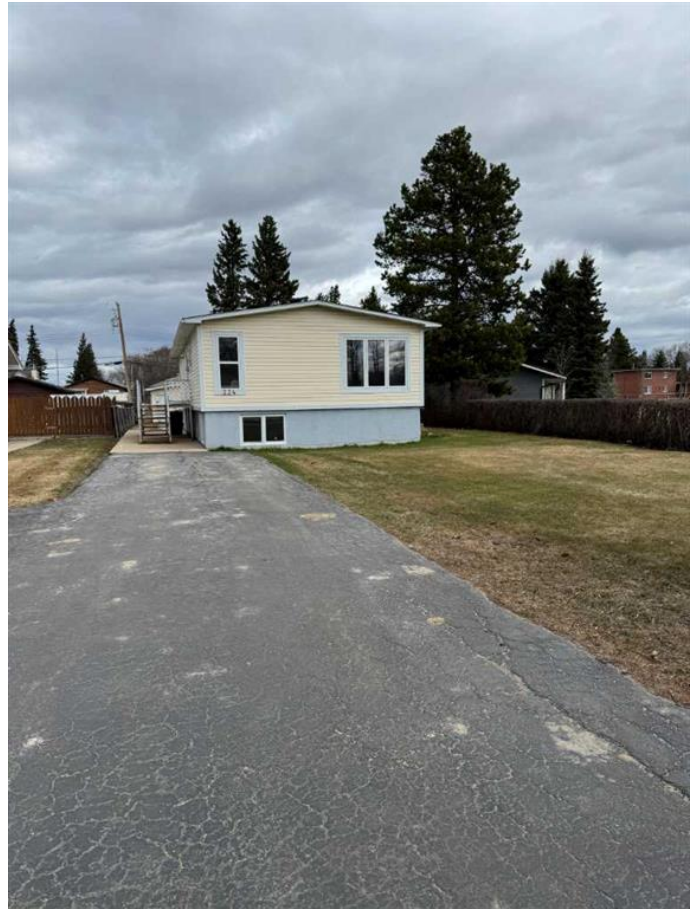
4 Bedroom, 3.00 Bathroom, 1,179 sqft

Residential on 0.22 Acres

NONE, Slave Lake, Alberta

GREAT NEIGHBORHOOD! 1178 sq ft 3 bedroom 3 bathroom home is waiting for you! Some love needed on the inside of the home to make more modern. Main level has vinyl windows from 2009. Downstairs has large windows that give the home a bi-level feel and a mother in law suit with kitchen, bedroom with huge walk in closet and a 4 pc bath. Spacious area in lower level for development. This home has a back lane with parking to detached double garage.

Built in 1973



## Essential Information

MLS® #	A2216677
Price	\$249,900
Bedrooms	4
Bathrooms	3.00
Full Baths	2
Half Baths	1
Square Footage	1,179
Acres	0.22
Year Built	1973
Type	Residential
Sub-Type	Detached
Style	Bungalow
Status	Active

## Community Information

Address 224 2 Avenue Ne

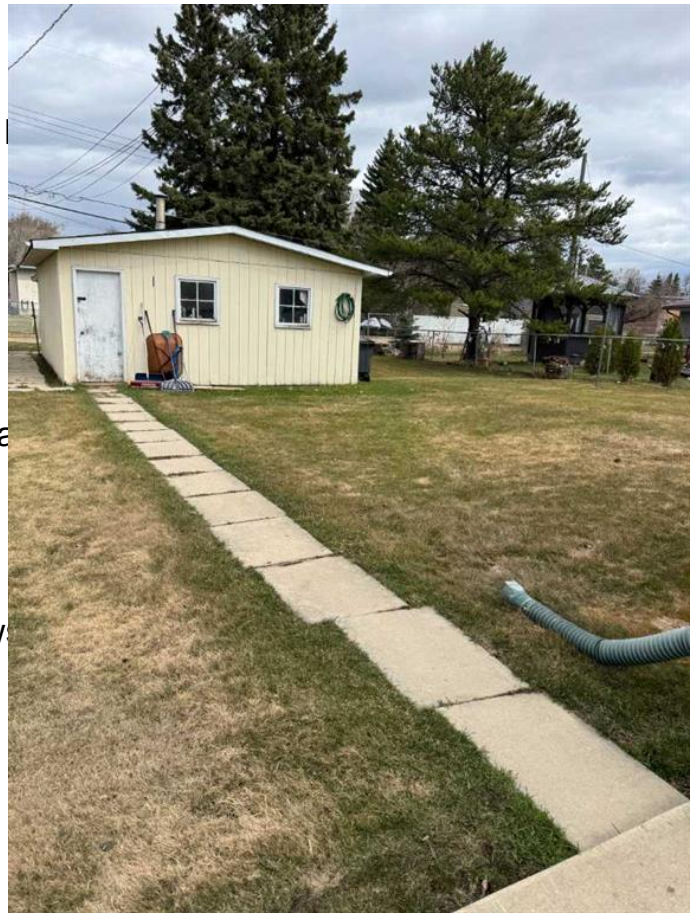
Subdivision	NONE
City	Slave Lake
County	Lesser Slave River No. 124, 1
Province	Alberta
Postal Code	T0G 2A2

### Amenities

Parking Spaces	6
Parking	Asphalt, Double Garage Detach
# of Garages	2

### Interior

Interior Features	Ceiling Fan(s), Vinyl Window
Appliances	Gas Stove
Heating	Forced Air
Cooling	None
Has Basement	Yes
Basement	Full, Partially Finished



### Exterior

Exterior Features	None
Lot Description	Back Lane, Irregular Lot, Lawn, Street Lighting
Roof	Asphalt Shingle
Construction	Manufactured Floor Joist, Wood Frame
Foundation	Poured Concrete

### Additional Information

Date Listed	April 30th, 2025
Zoning	R1

### Listing Details

Listing Office	ROYAL LEPAGE PROGRESSIVE REALTY
----------------	---------------------------------

Data is supplied by Pillar 9â„¢ MLSÂ® System. Pillar 9â„¢ is the owner of the copyright in its MLSÂ® System. Data is deemed reliable but is not guaranteed accurate by Pillar 9â„¢. The trademarks MLSÂ®, Multiple Listing ServiceÂ® and the associated logos are owned by The Canadian Real Estate Association (CREA) and identify the quality of services provided by real estate professionals who are members of CREA. Used under license.