

# \$395,000 - 501 Watson Avenue, Picture Butte

MLS® #A2216248

## \$395,000

5 Bedroom, 2.00 Bathroom, 1,178 sqft  
Residential on 0.15 Acres

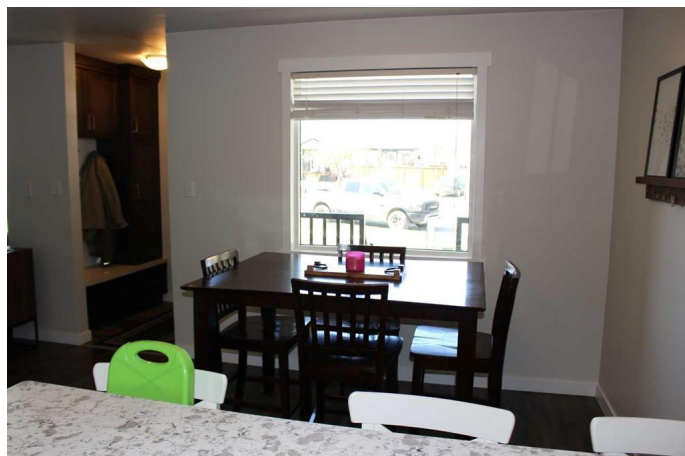
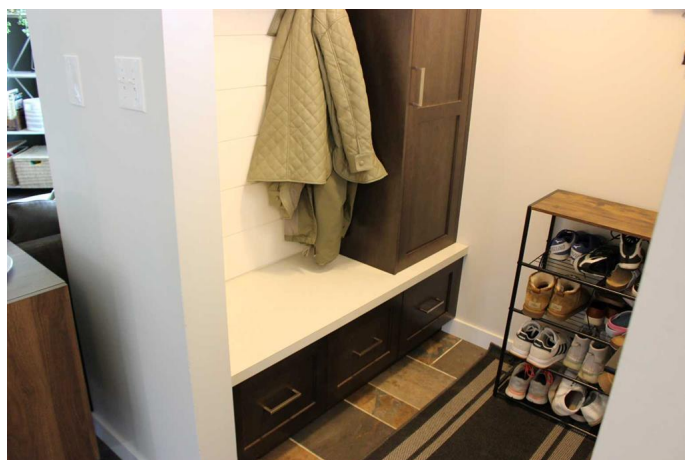
NONE, Picture Butte, Alberta

Not very often does a home like this come on the market! Completely renovated from top to bottom! Stunning kitchen with granite counter tops and breakfast bar, 3 good sized bedrooms on the main floor, beautiful main floor bath, large living room, and lots of storage. Downstairs you'll find a well thought out and totally redone basement boasting 2 large bedrooms with huge windows, family room, another full bath, laundry room and more storage. The attention to detail when this home was renovated is incredible. Outside there is concrete driveway, carport, more storage, private patio, massive garden shed, raised garden beds, RV parking, and still room for a detached garage. It's located on a quiet family friendly street, and only a few minute walk to schools and the recreation complex for added convenience. Don't snooze. This home won't last long!

Built in 1962

## Essential Information

MLS® #	A2216248
Price	\$395,000
Bedrooms	5
Bathrooms	2.00
Full Baths	2
Square Footage	1,178
Acres	0.15
Year Built	1962



Type	Residential
Sub-Type	Detached
Style	Bungalow
Status	Active

### **Community Information**

Address	501 Watson Avenue
Subdivision	NONE
City	Picture Butte
County	Lethbridge County
Province	Alberta
Postal Code	T0K 1V0

### **Amenities**

Parking Spaces	3
Parking	Carport

### **Interior**

Interior Features	Built-in Features, No Smoking Home, See Remarks, Storage
Appliances	Central Air Conditioner, Dishwasher, Refrigerator, Stove(s), Washer/Dryer, Window Coverings
Heating	Forced Air
Cooling	Central Air
Has Basement	Yes
Basement	Finished, Full

### **Exterior**

Exterior Features	Other, Private Yard, Storage
Lot Description	Back Lane, Back Yard, Corner Lot, Landscaped, Street Lighting
Roof	Flat Torch Membrane
Construction	Stone, Vinyl Siding
Foundation	Poured Concrete

### **Additional Information**

Date Listed	May 1st, 2025
Zoning	R1

### **Listing Details**

Listing Office	RE/MAX REAL ESTATE - LETHBRIDGE (PICTURE BUTTE)
----------------	---

Data is supplied by Pillar 9â„¸ MLSÂ® System. Pillar 9â„¸ is the owner of the copyright in its MLSÂ® System. Data is deemed reliable but is not guaranteed accurate by Pillar 9â„¸. The trademarks MLSÂ®, Multiple Listing ServiceÂ® and the associated logos are owned by The Canadian Real Estate Association (CREA) and identify the quality of services provided by real estate professionals who are members of CREA. Used under license.