

\$10 - 247 Spruce Street, Rural Red Deer County

MLS® #A2215879

\$10

0 Bedroom, 0.00 Bathroom,
Commercial on 0.00 Acres

Piper Creek Business Park, Rural Red Deer
County, Alberta

This industrial property features a 5-tonne overhead crane, four 16-foot loading doors for efficient shipping and receiving, and a dedicated compressor room. A make-up air unit ensures proper ventilation throughout the facility. The property also includes a gravel yard suitable for outdoor storage or parking. On the upper level, there are four modern executive offices, providing comfortable and professional workspace.

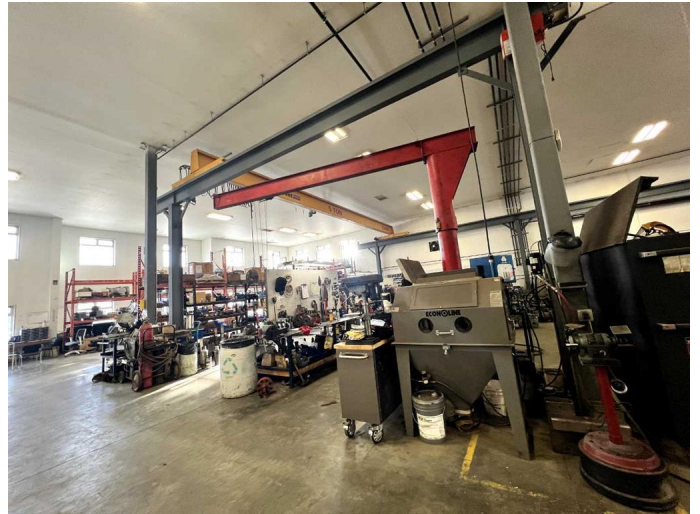
Built in 2014

Essential Information

MLS® #	A2215879
Price	\$10
Bathrooms	0.00
Acres	0.00
Year Built	2014
Type	Commercial
Sub-Type	Industrial
Status	Active

Community Information

Address	247 Spruce Street
Subdivision	Piper Creek Business Park
City	Rural Red Deer County
County	Red Deer County
Province	Alberta
Postal Code	T4E 1B4



Additional Information

Date Listed	April 28th, 2025
Days on Market	50
Zoning	BSI

Listing Details

Listing Office	Royal LePage Network Realty Corp.
----------------	-----------------------------------

Data is supplied by Pillar 9â„¸ MLSÂ® System. Pillar 9â„¸ is the owner of the copyright in its MLSÂ® System. Data is deemed reliable but is not guaranteed accurate by Pillar 9â„¸. The trademarks MLSÂ®, Multiple Listing ServiceÂ® and the associated logos are owned by The Canadian Real Estate Association (CREA) and identify the quality of services provided by real estate professionals who are members of CREA. Used under license.