

\$449,900 - B415058 Range Road 265, Rural Ponoka County

MLS® #A2215503

\$449,900

3 Bedroom, 2.00 Bathroom, 1,527 sqft
Residential on 10.03 Acres

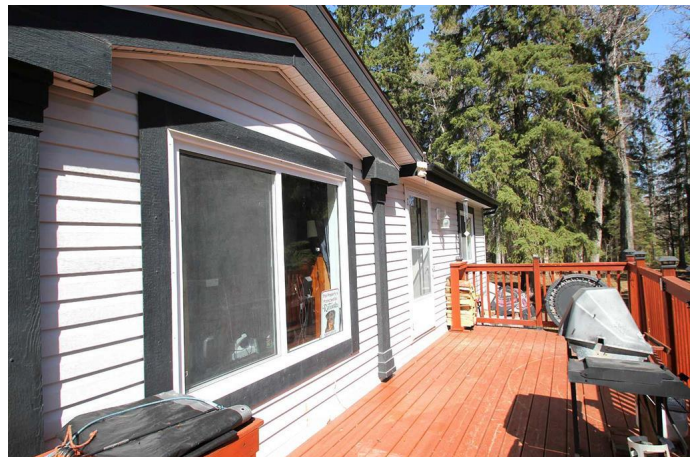
NONE, Rural Ponoka County, Alberta

A TRUE PICTUREESQUE SETTING. 10.03 ACRES.. Located just west of Wolf creek. Well cared for and well maintained. 2004 Module featuring 1520 Sq ft of living space with 3 bedrooms 2 bathrooms, large primary bedroom with walk in closet and 4 PC ensuite with jet tub. 17' Media room with glass French doors, vaulted callings, open kitchen with Island and much more. lots of upgrade's to include newer vinyl flooring, wood stove, fridge, washer, microwave, toilets and kitchen faucet. Furnace replaced in 2019. More than 400 Sq ft of deck on the front accessible from 2 doors and overlooks the landscape. Hot tub to relax and enjoy the view. This is a great set up for horses, beautifully treed with trails in and around the property. Fenced of area that is 100'x80' for the horses or other animals, natural spring runs through the property, Good water well, and lots of places to build yourself that big shop/garage. Come take a look.

Built in 2004

Essential Information

MLS® #	A2215503
Price	\$449,900
Bedrooms	3
Bathrooms	2.00
Full Baths	2



Square Footage	1,527
Acres	10.03
Year Built	2004
Type	Residential
Sub-Type	Detached
Style	Acreage with Residence, Modular Home
Status	Active

Community Information

Address	B415058 Range Road 265
Subdivision	NONE
City	Rural Ponoka County
County	Ponoka County
Province	Alberta
Postal Code	T4L 2N5

Amenities

Parking	Off Street, RV Access/Parking
---------	-------------------------------

Interior

Interior Features	Ceiling Fan(s), French Door, Open Floorplan, See Remarks, Vaulted Ceiling(s), Vinyl Windows, Walk-In Closet(s)
Appliances	Dishwasher, Electric Stove, Refrigerator, Washer/Dryer, Window Coverings
Heating	Forced Air, Natural Gas
Cooling	None
Fireplace	Yes
# of Fireplaces	1
Fireplaces	Wood Burning Stove
Basement	None

Exterior

Exterior Features	Other
Lot Description	Many Trees, Meadow
Roof	Shingle
Construction	Other
Foundation	Block

Additional Information

Date Listed	April 25th, 2025
Days on Market	10
Zoning	CRH

Listing Details

Listing Office	RE/MAX real estate central alberta
----------------	------------------------------------

Data is supplied by Pillar 9â„¢ MLS® System. Pillar 9â„¢ is the owner of the copyright in its MLS® System. Data is deemed reliable but is not guaranteed accurate by Pillar 9â„¢. The trademarks MLS®, Multiple Listing Service® and the associated logos are owned by The Canadian Real Estate Association (CREA) and identify the quality of services provided by real estate professionals who are members of CREA. Used under license.