

\$489,900 - 13010 88a Street, Grande Prairie

MLS® #A2213276

\$489,900

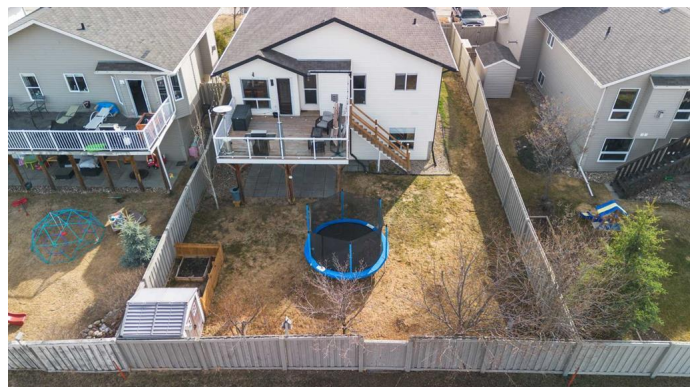
4 Bedroom, 3.00 Bathroom, 1,543 sqft

Residential on 0.14 Acres

Crystal Lake Estates, Grande Prairie, Alberta

This luxurious Clean Well maintained Fully Developed Modified BI-Level is a must see. Located in Sought after Crystal Lake Estates Subdivision in a quiet cul-de-sac backing onto Evelyn McBrien Park with no rear neighbors! This one has it all, location, size, renovated & freshly Painted, with lots extra finishes. Walk in to large front entry and up to spacious open main floor with vaulted ceiling in the living room, allowing for tons of natural light. Bright & open concept with Island, pantry in kitchen area, Coffee Bar, living room that features gas fireplace, dining area with patio doors that will take you out to large deck & down to your private backyard. The Upstairs offers a beautiful Spacious primary bedroom, with a walk-in closet and complete with an exquisite 5-piece ensuite bathroom. There is an office and 2 more large rooms on the main floor, with another 2 bedrooms downstairs, along with a good-sized laundry room. The finished walkout basement leads to your private spacious back yard. Take advantage of the warm summer evenings from the main floor deck, catch some shade on your covered patio or retreat to the refreshing atmosphere of your air-conditioned home. Attached is a good sized, heated garage which is wired for 220v. Stylish and open ended space, with built-in shelving, space saving Murphy bed downstairs, garburator, Reverse Osmosis water system complete this Excellent Family home.

Built in 2005



Essential Information

| | |
|----------------|-------------------|
| MLS® # | A2213276 |
| Price | \$489,900 |
| Bedrooms | 4 |
| Bathrooms | 3.00 |
| Full Baths | 3 |
| Square Footage | 1,543 |
| Acres | 0.14 |
| Year Built | 2005 |
| Type | Residential |
| Sub-Type | Detached |
| Style | Modified Bi-Level |
| Status | Active |

Community Information

| | |
|-------------|----------------------|
| Address | 13010 88a Street |
| Subdivision | Crystal Lake Estates |
| City | Grande Prairie |
| County | Grande Prairie |
| Province | Alberta |
| Postal Code | T8X 1V8 |

Amenities

| | |
|----------------|------------------------|
| Parking Spaces | 5 |
| Parking | Double Garage Attached |
| # of Garages | 2 |

Interior

| | |
|-------------------|----------------------------------------------------------------------------------------------------------------------------------|
| Interior Features | Ceiling Fan(s), Kitchen Island, No Smoking Home, Open Floorplan, Pantry, Storage, Vinyl Windows, Walk-In Closet(s), Sump Pump(s) |
| Appliances | Central Air Conditioner, Dishwasher, Dryer, Electric Range, Microwave Hood Fan, Refrigerator, Washer |
| Heating | Forced Air, Natural Gas |
| Cooling | Central Air |
| Fireplace | Yes |
| # of Fireplaces | 1 |
| Fireplaces | Gas |
| Has Basement | Yes |
| Basement | Finished, Full |

Exterior

| | |
|-------------------|--------------------------------------------------------------------------------------------------|
| Exterior Features | Other, Private Yard |
| Lot Description | Back Yard, Backs on to Park/Green Space, Cul-De-Sac, Few Trees, Front Yard, Landscaped, City Lot |
| Roof | Asphalt Shingle |
| Construction | Brick, Vinyl Siding |
| Foundation | Poured Concrete |

Additional Information

| | |
|----------------|------------------|
| Date Listed | April 18th, 2025 |
| Days on Market | 19 |
| Zoning | RS |

Listing Details

| | |
|----------------|-----------------------|
| Listing Office | RE/MAX Grande Prairie |
|----------------|-----------------------|

Data is supplied by Pillar 9â„¢ MLS® System. Pillar 9â„¢ is the owner of the copyright in its MLS® System. Data is deemed reliable but is not guaranteed accurate by Pillar 9â„¢. The trademarks MLS®, Multiple Listing Service® and the associated logos are owned by The Canadian Real Estate Association (CREA) and identify the quality of services provided by real estate professionals who are members of CREA. Used under license.