

\$95,000 - 8802 59 Avenue, Grande Prairie

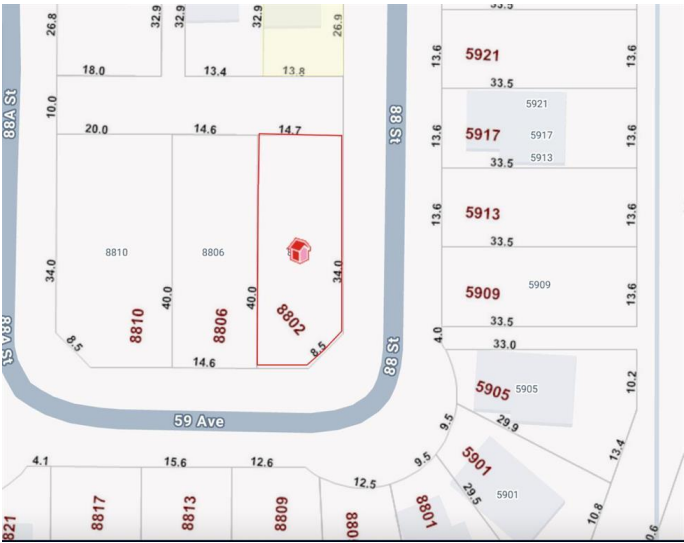
MLS® #A2210932

\$95,000

0 Bedroom, 0.00 Bathroom,
Land on 0.14 Acres

N/A, Grande Prairie, Alberta

Build Your New Home in Southwynd Estates!
Now availableâ€”a fully serviced residential lot,
ready for construction! Located in the
desirable Southwynd Estates community on
the southeast corner of Grande Prairie, this
large corner lot offers potential to capture
views of the pond to the south and never have
neighbours on three sides! Don't miss your
chance to make it yours!
Price does not include GST.



Essential Information

| | |
|-----------|------------------|
| MLS® # | A2210932 |
| Price | \$95,000 |
| Bathrooms | 0.00 |
| Acres | 0.14 |
| Type | Land |
| Sub-Type | Residential Land |
| Status | Active |

Community Information

| | |
|-------------|----------------|
| Address | 8802 59 Avenue |
| Subdivision | N/A |
| City | Grande Prairie |
| County | Grande Prairie |
| Province | Alberta |
| Postal Code | T8W 0J9 |

Additional Information

| | |
|-------------|------------------|
| Date Listed | April 24th, 2025 |
|-------------|------------------|

| | |
|----------------|----|
| Days on Market | 56 |
| Zoning | RS |

Listing Details

| | |
|----------------|------------------------------|
| Listing Office | Grassroots Realty Group Ltd. |
|----------------|------------------------------|

Data is supplied by Pillar 9â„¢ MLS® System. Pillar 9â„¢ is the owner of the copyright in its MLS® System. Data is deemed reliable but is not guaranteed accurate by Pillar 9â„¢. The trademarks MLS®, Multiple Listing Service® and the associated logos are owned by The Canadian Real Estate Association (CREA) and identify the quality of services provided by real estate professionals who are members of CREA. Used under license.