

\$69,900 - 8 Antler Close, Rural Athabasca County

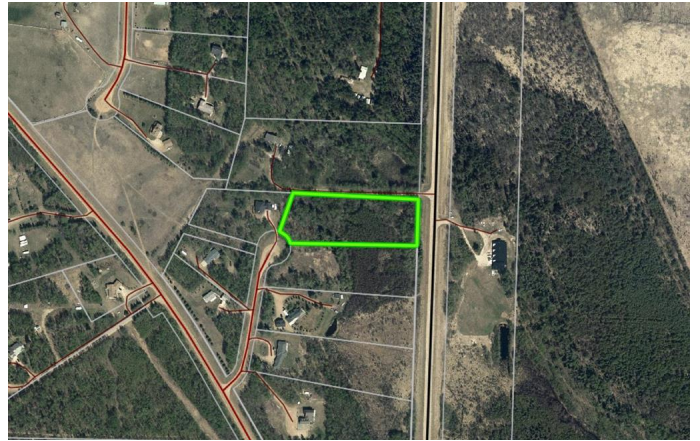
MLS® #A2210122

\$69,900

0 Bedroom, 0.00 Bathroom,
Land on 3.38 Acres

Deer Ridge Estates, Rural Athabasca County,
Alberta

Can't find what you are looking for in a pre-owned home? Considering building? Or maybe you want to build a house years from now? This 3.38-acre treed parcel in Deer Ridge Estates, only minutes from Town may be exactly what you have been looking for. Close to the Golf Course, Athabasca River, and other recreational amenities this area offers it may be the perfect choice.



Essential Information

| | |
|-----------|------------------|
| MLS® # | A2210122 |
| Price | \$69,900 |
| Bathrooms | 0.00 |
| Acres | 3.38 |
| Type | Land |
| Sub-Type | Residential Land |
| Status | Active |

Community Information

| | |
|-------------|------------------------|
| Address | 8 Antler Close |
| Subdivision | Deer Ridge Estates |
| City | Rural Athabasca County |
| County | Athabasca County |
| Province | Alberta |
| Postal Code | T9S 2A6 |

Additional Information

| | |
|-------------|------------------|
| Date Listed | April 13th, 2025 |
|-------------|------------------|

Days on Market 124

Zoning CR

Listing Details

Listing Office ROYAL LEPAGE COUNTY REALTY

Data is supplied by Pillar 9â„¢ MLS® System. Pillar 9â„¢ is the owner of the copyright in its MLS® System. Data is deemed reliable but is not guaranteed accurate by Pillar 9â„¢. The trademarks MLS®, Multiple Listing Service® and the associated logos are owned by The Canadian Real Estate Association (CREA) and identify the quality of services provided by real estate professionals who are members of CREA. Used under license.