

\$160,000 - 17232b Range Road 540, Rural Yellowhead County

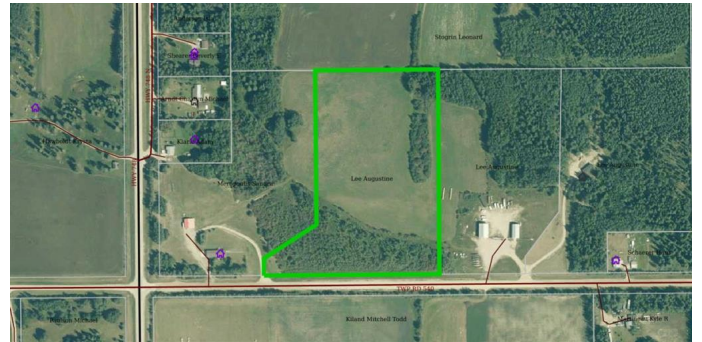
MLS® #A2209475

\$160,000

0 Bedroom, 0.00 Bathroom,
Land on 14.28 Acres

NONE, Rural Yellowhead County, Alberta

14.28 acres 2 miles north of Edson via
highway 748N. Pavement most of the way.
1/4 mile of gravel. Lots of building sites



Essential Information

| | |
|-----------|------------------|
| MLS® # | A2209475 |
| Price | \$160,000 |
| Bathrooms | 0.00 |
| Acres | 14.28 |
| Type | Land |
| Sub-Type | Residential Land |
| Status | Active |

Community Information

| | |
|-------------|-------------------------|
| Address | 17232b Range Road 540 |
| Subdivision | NONE |
| City | Rural Yellowhead County |
| County | Yellowhead County |
| Province | Alberta |
| Postal Code | T7E 3J7 |

Amenities

Utilities Electricity Available, Natural Gas Available

Exterior

Lot Description Rectangular Lot

Additional Information



| | |
|----------------|-----------------|
| Date Listed | April 7th, 2025 |
| Days on Market | 136 |
| Zoning | CRD |

Listing Details

Listing Office RE/MAX BOXSHAW FOUR REALTY

Data is supplied by Pillar 9â„¢ MLSÂ® System. Pillar 9â„¢ is the owner of the copyright in its MLSÂ® System. Data is deemed reliable but is not guaranteed accurate by Pillar 9â„¢. The trademarks MLSÂ®, Multiple Listing ServiceÂ® and the associated logos are owned by The Canadian Real Estate Association (CREA) and identify the quality of services provided by real estate professionals who are members of CREA. Used under license.