

\$499,900 - 403 Strathford Boulevard, Strathmore

MLS® #A2207410

\$499,900

4 Bedroom, 3.00 Bathroom, 1,030 sqft

Residential on 0.13 Acres

Strathaven, Strathmore, Alberta

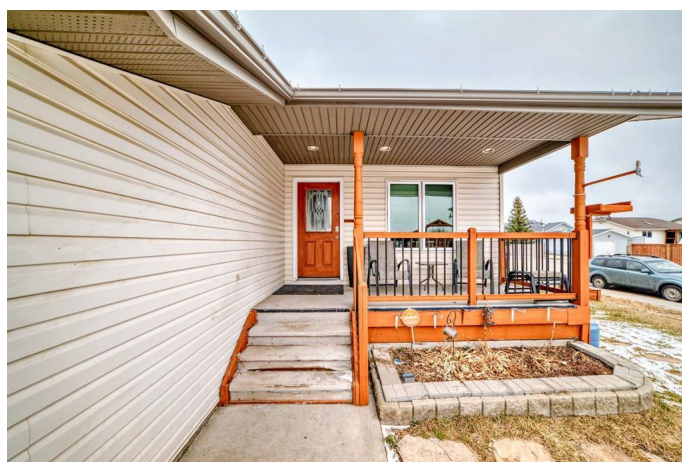
Motivated sellers, all offers considered!

Welcome to this very well maintained bungalow in Strathaven close to schools, great playgrounds, amenities and the hospital. Lots of space on the main level with spacious living room and a beautiful white kitchen with lots of cabinet and counter space, island, newer stainless steel appliances and newer Corian countertops. All main floor ceilings have been freshly painted. Large master bedroom with updated ensuite and carpet. Spacious 2nd bedroom and updated 4 piece bath. Main floor laundry area. Fully developed lower level with 2 more bedrooms, large rec room and 4 piece bath. Great double attached, heated garage with 220 wiring. Roomy backyard with new covered deck and beautiful landscaping, including a garden with a large garden shed! Newer Shingles, newer windows and doors, new railing on front deck, new furnace fan motor, Hepa filter and AC ..Great location and IMMACULATE!

Built in 2000

Essential Information

MLS® #	A2207410
Price	\$499,900
Bedrooms	4
Bathrooms	3.00
Full Baths	2
Half Baths	1



Square Footage	1,030
Acres	0.13
Year Built	2000
Type	Residential
Sub-Type	Detached
Style	Bungalow
Status	Active

Community Information

Address	403 Strathford Boulevard
Subdivision	Strathaven
City	Strathmore
County	Wheatland County
Province	Alberta
Postal Code	T1P1P2

Amenities

Parking Spaces	4
Parking	Double Garage Attached, Heated Garage
# of Garages	2

Interior

Interior Features	Ceiling Fan(s), Quartz Counters, WaterSense Fixture(s)
Appliances	Dishwasher, Electric Stove, Refrigerator, Washer/Dryer, Built-In Freezer
Heating	Forced Air, Natural Gas
Cooling	Central Air
Fireplace	Yes
# of Fireplaces	1
Fireplaces	Gas, Living Room, Mantle
Has Basement	Yes
Basement	Finished, Full

Exterior

Exterior Features	Garden, Private Yard, Storage
Lot Description	Back Yard, Low Maintenance Landscape, Corner Lot
Roof	Asphalt Shingle
Construction	Wood Frame
Foundation	Poured Concrete

Additional Information

Date Listed	April 1st, 2025
Days on Market	42
Zoning	R1

Listing Details

Listing Office	RE/MAX Complete Realty
----------------	------------------------

Data is supplied by Pillar 9â„¢ MLSÂ® System. Pillar 9â„¢ is the owner of the copyright in its MLSÂ® System. Data is deemed reliable but is not guaranteed accurate by Pillar 9â„¢. The trademarks MLSÂ®, Multiple Listing ServiceÂ® and the associated logos are owned by The Canadian Real Estate Association (CREA) and identify the quality of services provided by real estate professionals who are members of CREA. Used under license.