

\$499,777 - 122 Spruce Road, Turtle Lake

MLS® #A2199815

\$499,777

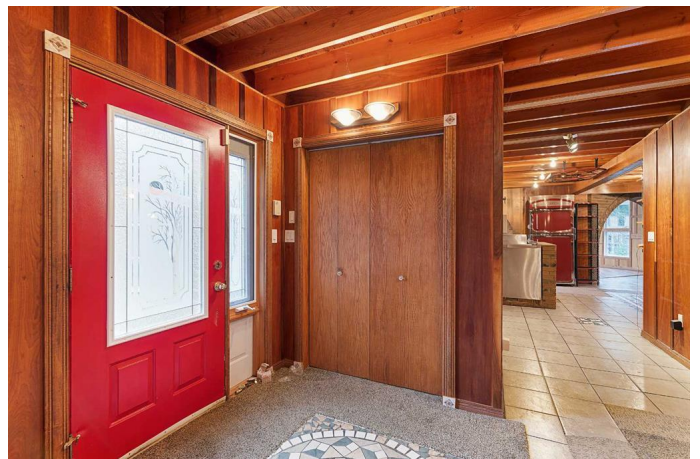
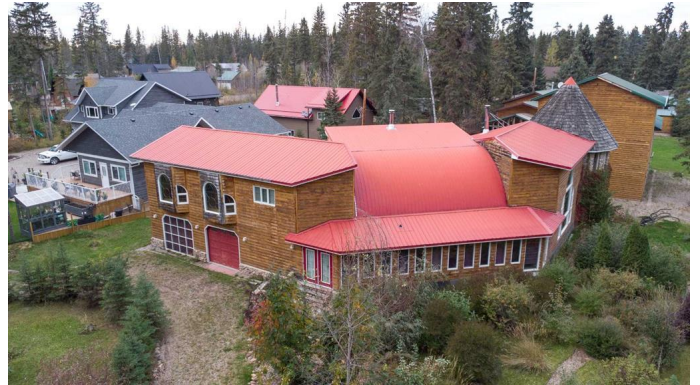
3 Bedroom, 3.00 Bathroom, 4,257 sqft

Residential on 0.32 Acres

NONE, Turtle Lake, Saskatchewan

Nestled in the serene enclave of Powm Beach on Turtle Lake, this custom-built masterpiece spanning over 4000 sq. ft. is a year-round sanctuary awaiting your presence. Situated on a coveted corner lot, this architectural gem boasts exquisite craftsmanship and attention to detail. The residence features three spacious bedrooms and three bathrooms, all adorned with in-floor heating for ultimate comfort. The interior exudes warmth and sophistication with exceptional millwork enhancing every corner while abundant natural light dances through each room. Step outside into your private courtyard oasis where tranquility reigns supreme. Discover amenities that elevate everyday living to an art form – from a custom Forno oven for culinary delights to a charming greenhouse(16' x 40') beckoning you to nurture nature's beauty. Three guest sheds(10' x 10') offer additional space for creativity or relaxation. Unique in its design and unparalleled in its allure, this lakeside haven promises an extraordinary lifestyle where luxury meets tranquility amidst the enchanting backdrop of Turtle Lake's pristine waters. Just a short walk to the beach in summer or enjoy ice fishing in winter. Don't miss out on exploring every detail through our immersive 3D virtual tour experience. This property is sold "as is, where is" without warranties or representations. Schedule "A" will form part of all offers.

Built in 2001



Essential Information

| | |
|----------------|-------------|
| MLS® # | A2199815 |
| Price | \$499,777 |
| Bedrooms | 3 |
| Bathrooms | 3.00 |
| Full Baths | 2 |
| Half Baths | 1 |
| Square Footage | 4,257 |
| Acres | 0.32 |
| Year Built | 2001 |
| Type | Residential |
| Sub-Type | Detached |
| Style | 2 Storey |
| Status | Active |

Community Information

| | |
|-------------|-----------------|
| Address | 122 Spruce Road |
| Subdivision | NONE |
| City | Turtle Lake |
| County | Saskatchewan |
| Province | Saskatchewan |
| Postal Code | S0M 2Y0 |

Amenities

| | |
|----------------|--|
| Parking Spaces | 6 |
| Parking | Double Garage Attached, Gravel Driveway, RV Access/Parking |
| # of Garages | 2 |

Interior

| | |
|-------------------|--|
| Interior Features | Ceiling Fan(s), High Ceilings, Open Floorplan, Storage, Sump Pump(s) |
| Appliances | None |
| Heating | Boiler, In Floor, Hot Water, Natural Gas |
| Cooling | None |
| Fireplace | Yes |
| # of Fireplaces | 1 |
| Fireplaces | Wood Burning |
| Has Basement | Yes |
| Basement | Crawl Space, None, Unfinished |

Exterior

| | |
|-------------------|----------------------------------|
| Exterior Features | None |
| Lot Description | Corner Lot, Irregular Lot, Treed |
| Roof | Metal |
| Construction | Log, Other, Stone, Wood Frame |
| Foundation | Wood |

Additional Information

| | |
|----------------|------------------|
| Date Listed | March 10th, 2025 |
| Days on Market | 110 |
| Zoning | Residential |

Listing Details

| | |
|----------------|------------------|
| Listing Office | CENTURY 21 DRIVE |
|----------------|------------------|

Data is supplied by Pillar 9â„¢ MLS® System. Pillar 9â„¢ is the owner of the copyright in its MLS® System. Data is deemed reliable but is not guaranteed accurate by Pillar 9â„¢. The trademarks MLS®, Multiple Listing Service® and the associated logos are owned by The Canadian Real Estate Association (CREA) and identify the quality of services provided by real estate professionals who are members of CREA. Used under license.