

# \$430,000 - 10 Root Close, Red Deer

MLS® #A2199536

## \$430,000

4 Bedroom, 2.00 Bathroom, 1,014 sqft  
Residential on 0.08 Acres

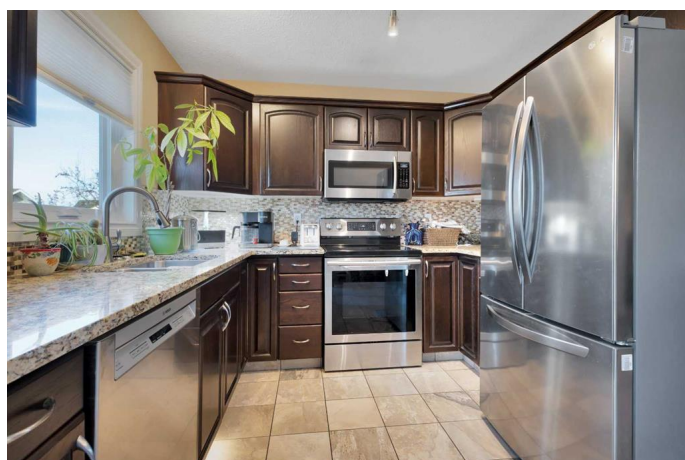
Rosedale Meadows, Red Deer, Alberta

Visit REALTOR® website for additional information. This charming 1½ duplex, features a cozy bungalow floor plan with a double attached garage in the quiet subdivision of Rosedale in Red Deer. The inviting kitchen is adorned with granite countertops, a stylish backsplash, & stainless appliances. Enjoy the comfort of in-floor heating with the tile floors in the kitchen & bathroom, while downstairs features carpet & elegant bamboo flooring with in-floor heat as well. The main floor includes 2 beds & a 4 pc bath, with the master suite offering a walk-in closet with a charming barn door, & the convenience of main floor laundry. The partially finished basement presents a recreation room, 2 additional beds, & a 3 pc bath - all just awaiting its ceiling to be added. The maintenance free backyard is landscaped with fabric & pea gravel, enclosed by a vinyl fence that includes a garbage nook.

Built in 2003

## Essential Information

MLS® #	A2199536
Price	\$430,000
Bedrooms	4
Bathrooms	2.00
Full Baths	2
Square Footage	1,014
Acres	0.08



Year Built	2003
Type	Residential
Sub-Type	Semi Detached
Style	Side by Side, Bungalow
Status	Active

### Community Information

Address	10 Root Close
Subdivision	Rosedale Meadows
City	Red Deer
County	Red Deer
Province	Alberta
Postal Code	T4P 3X3

### Amenities

Parking Spaces	4
Parking	Double Garage Attached, 220 Volt Wiring, Front Drive
# of Garages	2

### Interior

Interior Features	Ceiling Fan(s), Central Vacuum, Closet Organizers, Granite Counters, No Smoking Home, Soaking Tub, Walk-In Closet(s)
Appliances	Dishwasher, Microwave, Window Coverings, Electric Range
Heating	In Floor, Forced Air
Cooling	None
Fireplaces	None
Has Basement	Yes
Basement	Full, Partially Finished

### Exterior

Exterior Features	Private Yard, Rain Gutters, Private Entrance
Lot Description	Back Lane, Back Yard, Cul-De-Sac, Front Yard, Landscaped, Lawn, Level, Low Maintenance Landscape, Street Lighting, Few Trees, Standard Shaped Lot
Roof	Asphalt Shingle, Shingle
Construction	Brick, Concrete, Vinyl Siding, Wood Frame
Foundation	Poured Concrete

### Additional Information

Date Listed	March 5th, 2025
-------------	-----------------

Days on Market	64
Zoning	R-M

## **Listing Details**

Listing Office	PG Direct Realty Ltd.
----------------	-----------------------

Data is supplied by Pillar 9â„¢ MLS® System. Pillar 9â„¢ is the owner of the copyright in its MLS® System. Data is deemed reliable but is not guaranteed accurate by Pillar 9â„¢. The trademarks MLS®, Multiple Listing Service® and the associated logos are owned by The Canadian Real Estate Association (CREA) and identify the quality of services provided by real estate professionals who are members of CREA. Used under license.