

\$108,000 - Lot 3, Willowside Estates, Rural Woodlands County

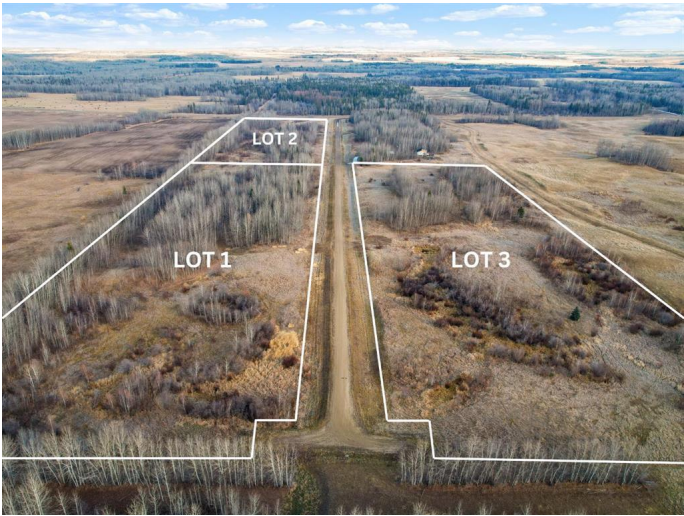
MLS® #A2198504

\$108,000

0 Bedroom, 0.00 Bathroom,
Land on 13.00 Acres

NONE, Rural Woodlands County, Alberta

13 acres with no building deadlines from the developer. A perfect blend of nature and opportunity to Call Home. This beautiful natural piece of land is located in Willowside Estates, Woodlands County, situated between Whitecourt and Mayerthorpe. The property features rolling terrain with trees and an ideal building spot. Room for your garden or hobby farm. Enjoy this space as your private camp, retreat, or future home. The area is surrounded by farmland, wildlife, and nature, providing a tranquil atmosphere. Power is available in the subdivision. Gas is pre-paid to the riser on this lot. Lot 3 offers a generous size of 13 acres.



Essential Information

| | |
|-----------|------------------|
| MLS® # | A2198504 |
| Price | \$108,000 |
| Bathrooms | 0.00 |
| Acres | 13.00 |
| Type | Land |
| Sub-Type | Residential Land |
| Status | Active |

Community Information

| | |
|-------------|---------------------------|
| Address | Lot 3, Willowside Estates |
| Subdivision | NONE |
| City | Rural Woodlands County |

| | |
|-------------|------------------|
| County | Woodlands County |
| Province | Alberta |
| Postal Code | T0E 1N0 |

Additional Information

| | |
|----------------|-----------------|
| Date Listed | March 2nd, 2025 |
| Days on Market | 74 |
| Zoning | Agricultural |

Listing Details

| | |
|----------------|----------------------------|
| Listing Office | ROYAL LEPAGE MODERN REALTY |
|----------------|----------------------------|

Data is supplied by Pillar 9â„¢ MLS® System. Pillar 9â„¢ is the owner of the copyright in its MLS® System. Data is deemed reliable but is not guaranteed accurate by Pillar 9â„¢. The trademarks MLS®, Multiple Listing Service® and the associated logos are owned by The Canadian Real Estate Association (CREA) and identify the quality of services provided by real estate professionals who are members of CREA. Used under license.