

# \$79,800 - 22a, 416 Meridian Road Se, Calgary

MLS® #A2198214

**\$79,800**

0 Bedroom, 0.00 Bathroom,  
Commercial on 0.00 Acres

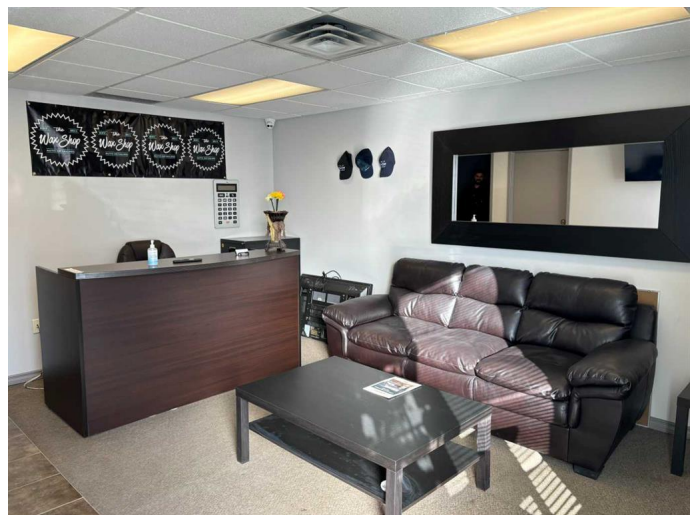
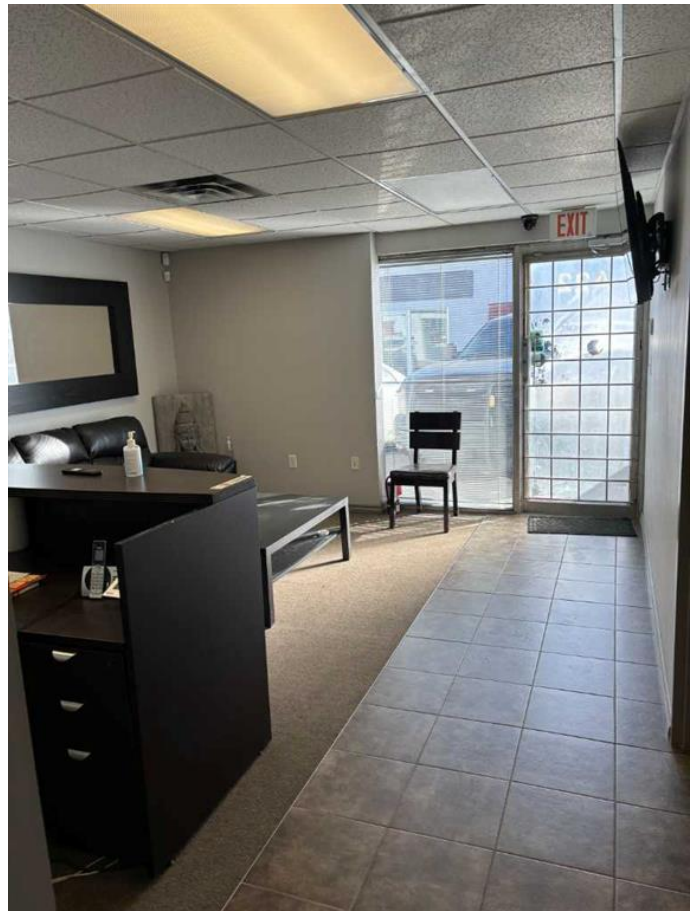
Meridian, Calgary, Alberta

Turnkey detailing business (13 years) with mechanic set up for sale in SE Calgary with easy access from Barlow Trail, minutes away from Memorial Trail and Deerfoot Trail. Full air makeup system, 12,000lbs Hoist, tire machine, balancer and compressor system. Newer (1 year old) heated pressure washer with detailing station, chemicals and washer/dryer for convenience. Commercial bay with front reception, main office, second office, full kitchen/staff room, extra storage room, handicap bathroom and staff bathroom at rear workspace. Extra storage with mezzanine that offers extra storage for tires, car parts and other items. Reasonable rent for this size of bay at \$5,075/month including operating costs, lease has over 3.5 years left and one option to renew (5) years. Good amount of parking with 3 at the front of the business, 2 at the side and 4 at the rear for patrons and overflow parking. Build on the existing customer base and bring your own existing customers to be your own boss.

Built in 1977

## Essential Information

MLS® #	A2198214
Price	\$79,800
Bathrooms	0.00
Acres	0.00
Year Built	1977



Type	Commercial
Sub-Type	Business
Status	Active

### Community Information

Address	22a, 416 Meridian Road Se
Subdivision	Meridian
City	Calgary
County	Calgary
Province	Alberta
Postal Code	T2A 1X2

### Additional Information

Date Listed	February 28th, 2025
Days on Market	176

### Listing Details

Listing Office	Century 21 Bravo Realty
----------------	-------------------------

Data is supplied by Pillar 9â„¢ MLS® System. Pillar 9â„¢ is the owner of the copyright in its MLS® System. Data is deemed reliable but is not guaranteed accurate by Pillar 9â„¢. The trademarks MLS®, Multiple Listing Service® and the associated logos are owned by The Canadian Real Estate Association (CREA) and identify the quality of services provided by real estate professionals who are members of CREA. Used under license.