

\$103,900 - 309 Wolf Run Drive, Rural Ponoka County

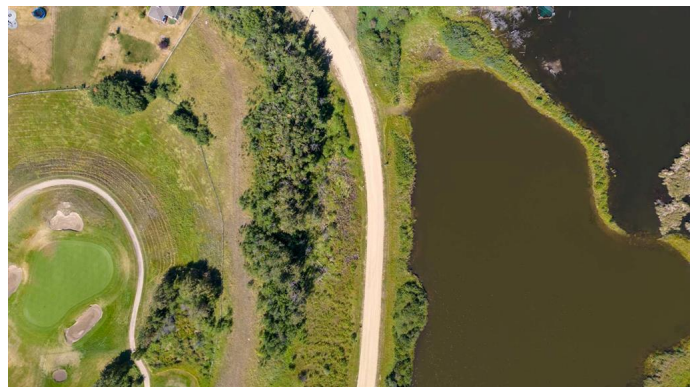
MLS® #A2194603

\$103,900

0 Bedroom, 0.00 Bathroom,
Land on 0.36 Acres

Wolf Creek Village, Rural Ponoka County,
Alberta

309 Wolf Run Drive is a very special lot at Wolf Creek Village. The land offers beautiful, peaceful views of the pond to the North/NE, AND a hilltop South/SW view down to the 12th green of the Links. It is a unique lot that is perfectly suited for an equally unique home. The legendary Wolf Creek Golf Resort is conveniently located between Edmonton and Calgary... just off the QEII and Hwy 2A with quick access to the two closest communities - the Town of Ponoka and the City of Lacombe. Now with new ownership/management, the golf course is re-capturing its former glory. The location also provides easy access to year-round recreational opportunities found in Central Alberta such as J.J. Collett Natural Area, Gull Lake, Rocky Mountain House, etc.



Essential Information

MLS® #	A2194603
Price	\$103,900
Bathrooms	0.00
Acres	0.36
Type	Land
Sub-Type	Residential Land
Status	Active

Community Information

Address	309 Wolf Run Drive
---------	--------------------

Subdivision	Wolf Creek Village
City	Rural Ponoka County
County	Ponoka County
Province	Alberta
Postal Code	T4J 0B3

Exterior

Lot Description	Native Plants, On Golf Course, Reverse Pie Shaped Lot, Rolling Slope, Treed, Views
-----------------	--

School Information

District	Wolf Creek School Division No. 72
----------	-----------------------------------

Additional Information

Date Listed	February 14th, 2025
Days on Market	151
Zoning	RR

Listing Details

Listing Office	Royal LePage Lifestyles Realty
----------------	--------------------------------

Data is supplied by Pillar 9â„¢ MLS® System. Pillar 9â„¢ is the owner of the copyright in its MLS® System. Data is deemed reliable but is not guaranteed accurate by Pillar 9â„¢. The trademarks MLS®, Multiple Listing Service® and the associated logos are owned by The Canadian Real Estate Association (CREA) and identify the quality of services provided by real estate professionals who are members of CREA. Used under license.