

\$215,000 - 339 Muirfield Crescent, Lyalta

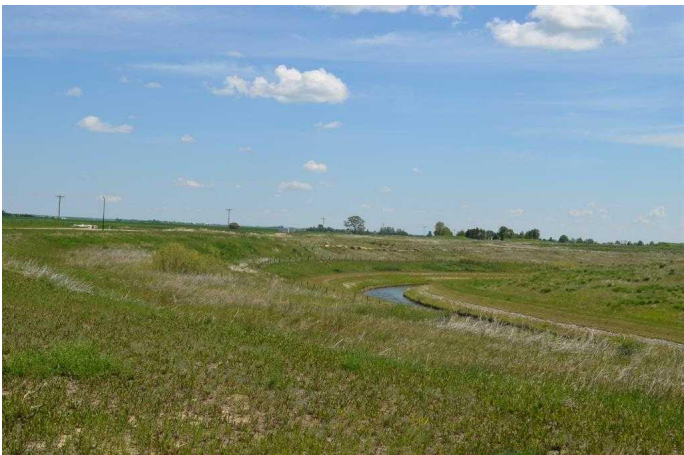
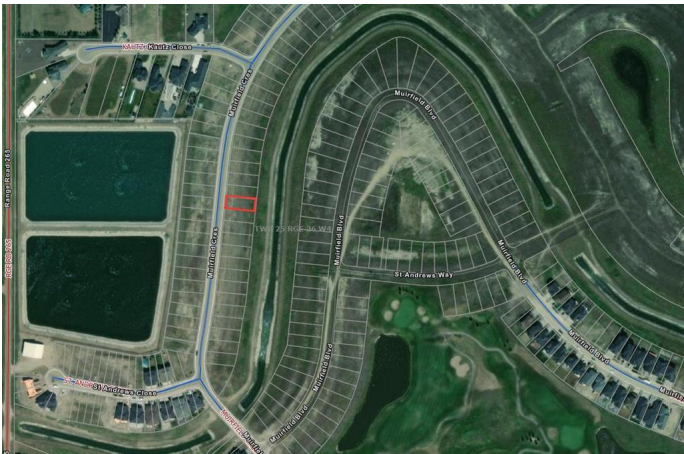
MLS® #A2192551

\$215,000

0 Bedroom, 0.00 Bathroom,
Land on 0.15 Acres

Lakes of Muirfield, Lyalta, Alberta

Welcome to the gated community in Lyalta- LAKES OF MUIRFIELD, limited opportunity to own a WEST FACING 50 ft X 127 ft WALK OUT lot backing onto a canal. Bring your own builder and build customized home with triple car garage. Lot's of development in the area including proposed De Haviland manufacturing plant. Donâ€™t let this slip away, only 25 mins drive from Calgary, Strathmore and Chestermere city limits.



Essential Information

MLS® #	A2192551
Price	\$215,000
Bathrooms	0.00
Acres	0.15
Type	Land
Sub-Type	Residential Land
Status	Active

Community Information

Address	339 Muirfield Crescent
Subdivision	Lakes of Muirfield
City	Lyalta
County	Wheatland County
Province	Alberta
Postal Code	T0J1Y1

Amenities

Amenities	Other
-----------	-------

Exterior

Lot Description Rectangular Lot

Additional Information

Date Listed February 4th, 2025
Days on Market 91
Zoning R-1
HOA Fees 85
HOA Fees Freq. MON

Listing Details

Listing Office eXp Realty

Data is supplied by Pillar 9â„¢ MLS® System. Pillar 9â„¢ is the owner of the copyright in its MLS® System. Data is deemed reliable but is not guaranteed accurate by Pillar 9â„¢. The trademarks MLS®, Multiple Listing Service® and the associated logos are owned by The Canadian Real Estate Association (CREA) and identify the quality of services provided by real estate professionals who are members of CREA. Used under license.