

\$439,900 - Se-25-72-5-w6, Rural Grande Prairie No. 1, County of

MLS® #A2192321

\$439,900

0 Bedroom, 0.00 Bathroom,
Land on 111.35 Acres

NONE, Rural Grande Prairie No. 1, County of,
Alberta

****\$4200**** annual surface lease revenue. Nice parcel of farmland 15km out of Grande Prairie. This land is open and could be used for farmland, grazing, hay or a large parcel for an acreage. The convenient location is really hard to come by this close to the city. There are good wells in the area. Contact your agent with any questions or more details.



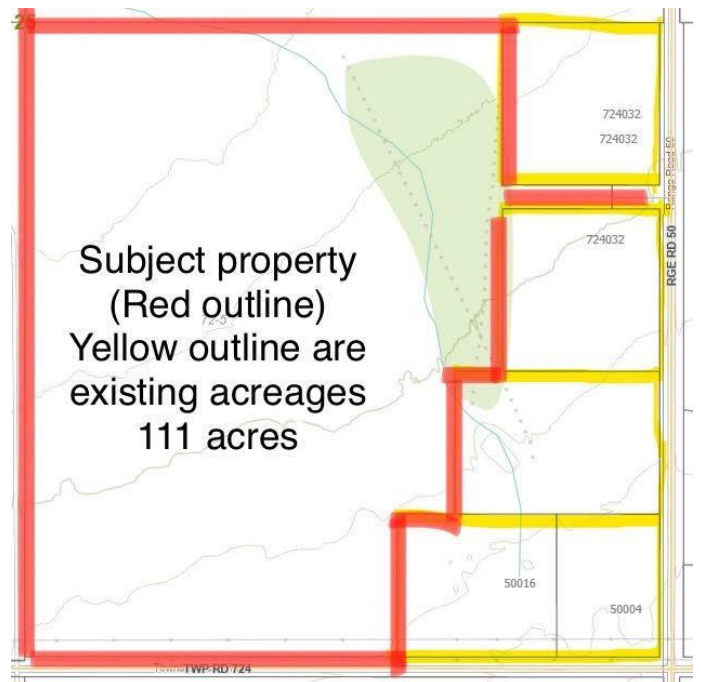
Essential Information

MLS® #	A2192321
Price	\$439,900
Bathrooms	0.00
Acres	111.35
Type	Land
Sub-Type	Residential Land
Status	Active

Community Information

Address	Se-25-72-5-w6
Subdivision	NONE
City	Rural Grande Prairie No. 1, County of
County	Grande Prairie No. 1, County of
Province	Alberta
Postal Code	T0H 3C0

Additional Information



Date Listed	February 4th, 2025
Days on Market	92
Zoning	AG

Listing Details

Listing Office	Grassroots Realty Group Ltd.
----------------	------------------------------

Data is supplied by Pillar 9â„¢ MLS® System. Pillar 9â„¢ is the owner of the copyright in its MLS® System. Data is deemed reliable but is not guaranteed accurate by Pillar 9â„¢. The trademarks MLS®, Multiple Listing Service® and the associated logos are owned by The Canadian Real Estate Association (CREA) and identify the quality of services provided by real estate professionals who are members of CREA. Used under license.