

# \$1,800,000 - Horse Creek, Rural Rocky View County

MLS® #A2190971

**\$1,800,000**

0 Bedroom, 0.00 Bathroom,  
Land on 149.10 Acres

NONE, Rural Rocky View County, Alberta

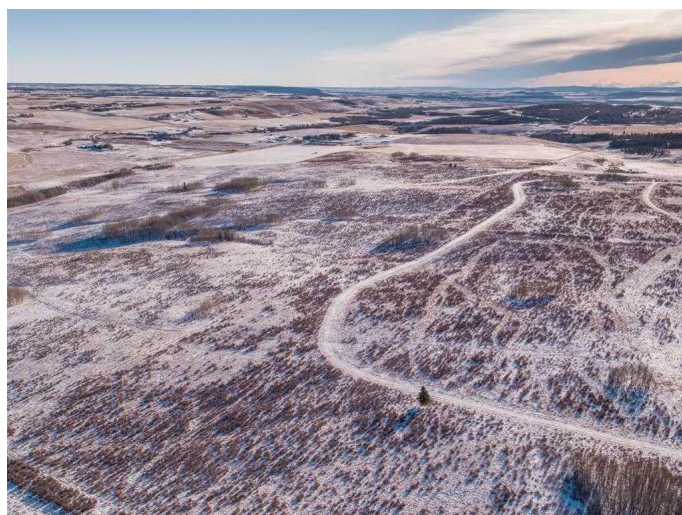
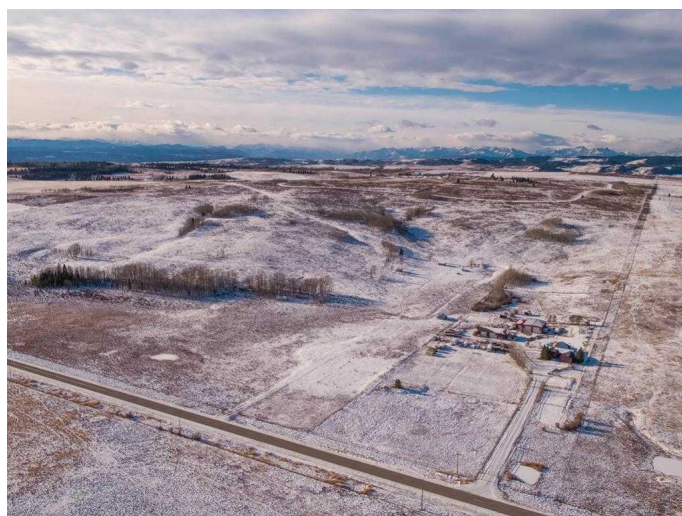
Incredible scenic 149.10 acres of land. There is also an adjoining 1/4 section of land that can be purchased in conjunction with this one. Potentially 1/2 section of land only minutes from Cochrane off of Horse Creek Road. Rolling hills, lush greens and groups of trees cover the land. Suitable for grazing/agriculture now or as an investment/development. The last water test yielded an amazing 60 GPM. Nearby subdivisions have smaller 4 acre parcel rural residential homes. The potential and opportunities are endless. Owner will look at all offers

## Essential Information

|           |                  |
|-----------|------------------|
| MLS® #    | A2190971         |
| Price     | \$1,800,000      |
| Bathrooms | 0.00             |
| Acres     | 149.10           |
| Type      | Land             |
| Sub-Type  | Residential Land |
| Status    | Active           |

## Community Information

|             |                         |
|-------------|-------------------------|
| Address     | Horse Creek             |
| Subdivision | NONE                    |
| City        | Rural Rocky View County |
| County      | Rocky View County       |
| Province    | Alberta                 |



Postal Code            T0L 0W0

### **Additional Information**

Date Listed            January 29th, 2025

Days on Market       187

Zoning                 RF

### **Listing Details**

Listing Office           RE/MAX House of Real Estate

Data is supplied by Pillar 9â„¢ MLS® System. Pillar 9â„¢ is the owner of the copyright in its MLS® System. Data is deemed reliable but is not guaranteed accurate by Pillar 9â„¢. The trademarks MLS®, Multiple Listing Service® and the associated logos are owned by The Canadian Real Estate Association (CREA) and identify the quality of services provided by real estate professionals who are members of CREA. Used under license.