

\$10 - 218, 1217 Centre Street Nw, Calgary

MLS® #A2186050

\$10

0 Bedroom, 0.00 Bathroom,
Commercial on 0.00 Acres

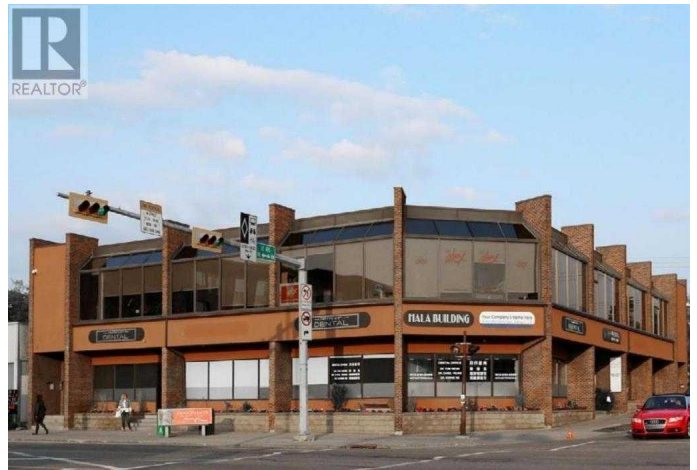
Crescent Heights, Calgary, Alberta

Beautifully renovated Office space of 2,552sf, with easy access to downtown core and bus routes. Best suited for a law firm, real estate, accounting, mortgage, engineering or insurance office. Desirable location as building faces directly onto Center Street & 12th Avenue. Currently 7 private offices, reception, kitchen & bullpen, and storage area. Secure underground parking and bike storage for tenant's use. HVAC hours are 24-hours per day, 7 days a week. On-site secure storage possibly available. FOB and intercom entry, and security camera monitored. Telus Fiber and Shaw Cable available subject to tenant confirmation. Parking is 1 per 500sf; Surface (\$125/stall) and underground parking (\$175/stall) stalls available, plus five (5) visitor parking stalls and on-street parking. Numerous restaurants, banks and shopping within walking distance. Utilities included in operating costs.

Built in 1983

Essential Information

| | |
|------------|------------|
| MLS® # | A2186050 |
| Price | \$10 |
| Bathrooms | 0.00 |
| Acres | 0.00 |
| Year Built | 1983 |
| Type | Commercial |
| Sub-Type | Office |



Status Active

Community Information

Address 218, 1217 Centre Street Nw
Subdivision Crescent Heights
City Calgary
County Calgary
Province Alberta
Postal Code T2E 2R3

Amenities

Parking Spaces 5

Additional Information

Date Listed January 7th, 2025
Days on Market 225

Listing Details

Listing Office RE/MAX Complete Realty

Data is supplied by Pillar 9â„¢ MLSÂ® System. Pillar 9â„¢ is the owner of the copyright in its MLSÂ® System. Data is deemed reliable but is not guaranteed accurate by Pillar 9â„¢. The trademarks MLSÂ®, Multiple Listing ServiceÂ® and the associated logos are owned by The Canadian Real Estate Association (CREA) and identify the quality of services provided by real estate professionals who are members of CREA. Used under license.