

\$560,000 - 18 Palmer Circle, Blackfalds

MLS® #A2143466

\$560,000

3 Bedroom, 2.00 Bathroom, 1,586 sqft
Residential on 0.09 Acres

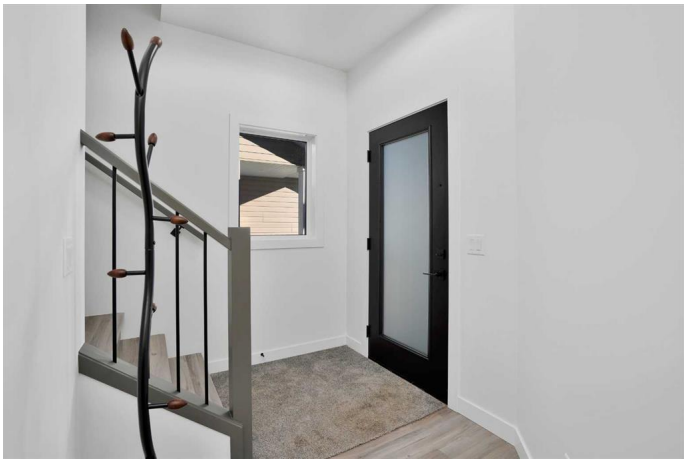
Panorama Estates, Blackfalds, Alberta

Welcome to the RUBY built by Award Winning Abbey Platinum Master Built on the highly desirable Palmer Circle in Blackfalds. This 1586 sq foot 2 storey has an amazing modern sight lines and curb appeal with stunning brick accents, wood grain metal siding . A spacious entrance greets you as you enter this 3 bedroom 2.5 bath home. An open floor plan , living room with a fireplace , large kitchen with amazing backsplash and quartz countertops . As you take a walk upstairs you will find a Primary bedroom with a 3 pcs ensuite, as well as 2 more ample sized bedrooms and a 4 pc bath. This home has an upstairs laundry are for added convivence. The unfinished basement features 9 foot ceilings and can accommodate a 4 pcs bath, family room and a bedroom, just add your own creative design.

Built in 2024

Essential Information

| | |
|----------------|-----------|
| MLS® # | A2143466 |
| Price | \$560,000 |
| Bedrooms | 3 |
| Bathrooms | 2.00 |
| Full Baths | 1 |
| Half Baths | 1 |
| Square Footage | 1,586 |
| Acres | 0.09 |
| Year Built | 2024 |



| | |
|----------|-------------|
| Type | Residential |
| Sub-Type | Detached |
| Style | 2 Storey |
| Status | Active |

Community Information

| | |
|-------------|------------------|
| Address | 18 Palmer Circle |
| Subdivision | Panorama Estates |
| City | Blackfalds |
| County | Lacombe County |
| Province | Alberta |
| Postal Code | T4M 0N7 |

Amenities

| | |
|----------------|------------------------|
| Parking Spaces | 2 |
| Parking | Double Garage Attached |
| # of Garages | 2 |

Interior

| | |
|-------------------|--|
| Interior Features | Kitchen Island, No Smoking Home |
| Appliances | Dishwasher, Microwave, Range, Refrigerator |
| Heating | High Efficiency |
| Cooling | None |
| Has Basement | Yes |
| Basement | Full, Unfinished |

Exterior

| | |
|-------------------|--|
| Exterior Features | None |
| Lot Description | Back Lane, Front Yard, Gentle Sloping, Private |
| Roof | Asphalt Shingle |
| Construction | Brick, Concrete, Vinyl Siding, Wood Frame |
| Foundation | Poured Concrete |

Additional Information

| | |
|----------------|----------------|
| Date Listed | July 4th, 2024 |
| Days on Market | 358 |
| Zoning | R1M |

Listing Details

Listing Office

RE/MAX real estate central alberta

Data is supplied by Pillar 9â„¢ MLSÂ® System. Pillar 9â„¢ is the owner of the copyright in its MLSÂ® System. Data is deemed reliable but is not guaranteed accurate by Pillar 9â„¢. The trademarks MLSÂ®, Multiple Listing ServiceÂ® and the associated logos are owned by The Canadian Real Estate Association (CREA) and identify the quality of services provided by real estate professionals who are members of CREA. Used under license.