

# \$1,090,000 - 259 Mayland Place Ne, Calgary

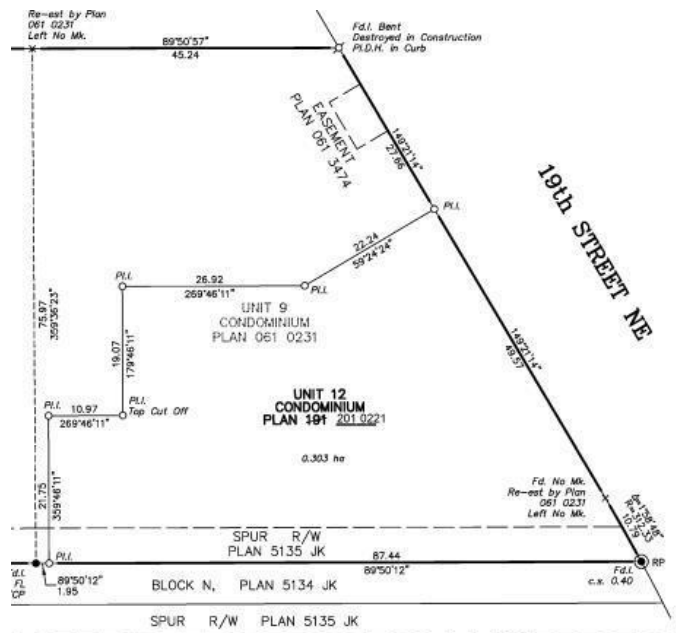
MLS® #A2136297

**\$1,090,000**

0 Bedroom, 0.00 Bathroom,  
Land on 0.75 Acres

Mayland, Calgary, Alberta

.75 Acre Development Site in Mayland ideal for owner/user use up to 20,000 sf building. Excellent access to Barlow and Deerfoot Trails, Memorial Drive and Highway 1. Only minutes away from shopping centers, and restaurants. A bus stop is adjacent to the building and the LRT only 3 minutes away. Site has over \$100,000 of improvements.



## Essential Information

MLS® #	A2136297
Price	\$1,090,000
Bathrooms	0.00
Acres	0.75
Type	Land
Sub-Type	Industrial Land
Status	Active

## Community Information

Address	259 Mayland Place Ne
Subdivision	Mayland
City	Calgary
County	Calgary
Province	Alberta
Postal Code	T2E7Z8

## Amenities

Amenities	None
-----------	------

## Additional Information

Date Listed July 16th, 2024

Days on Market 383

Zoning I-G

### **Listing Details**

Listing Office Royal LePage Solutions

Data is supplied by Pillar 9â„¢ MLS® System. Pillar 9â„¢ is the owner of the copyright in its MLS® System. Data is deemed reliable but is not guaranteed accurate by Pillar 9â„¢. The trademarks MLS®, Multiple Listing Service® and the associated logos are owned by The Canadian Real Estate Association (CREA) and identify the quality of services provided by real estate professionals who are members of CREA. Used under license.