

\$352,000 - 34 903 Crystallina Nera Way, Edmonton

MLS® #E4446259

\$352,000

3 Bedroom, 2.50 Bathroom, 1,498 sqft

Condo / Townhouse on 0.00 Acres

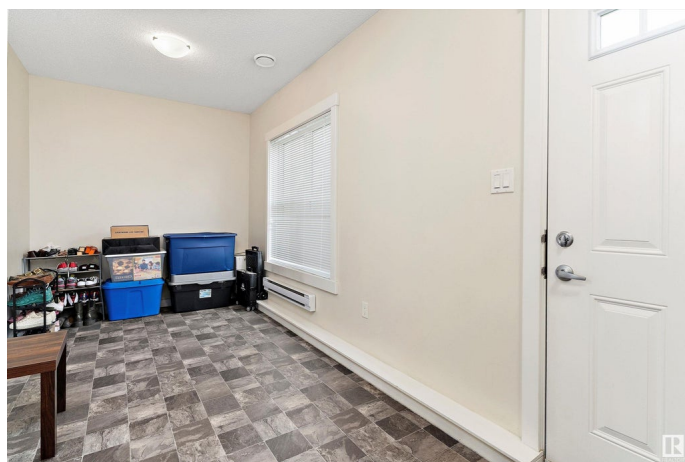
Crystallina Nera West, Edmonton, AB

Welcome to this immaculate townhome in Crystallina Nera, featuring a double attached garage and a range of thoughtful upgrades. The open-concept main floor offers 9-foot ceilings and a bright, airy layout that seamlessly connects the kitchen, dining, and living spaces. The kitchen is both stylish and functional, with quartz countertops, tile backsplash, modern cabinetry, and stainless steel appliances. A south-facing balcony off the living room is perfect for relaxing or entertaining. Upstairs, you'll find three spacious bedrooms and 2.5 bathrooms, including a primary suite with custom closet organizers and an upgraded linen closet. The versatile lower-level flex space is ideal for a home office, gym, or extra storage. Located close to shopping, public transit, and with quick access to the Anthony Henday, this move-in ready home offers the perfect blend of style, space, and convenience.

Built in 2017

Essential Information

MLS® #	E4446259
Price	\$352,000
Bedrooms	3
Bathrooms	2.50
Full Baths	2



Half Baths	1
Square Footage	1,498
Acres	0.00
Year Built	2017
Type	Condo / Townhouse
Sub-Type	Townhouse
Style	3 Storey
Status	Active

Community Information

Address	34 903 Crystallina Nera Way
Area	Edmonton
Subdivision	Crystallina Nera West
City	Edmonton
County	ALBERTA
Province	AB
Postal Code	T5Z 0N6

Amenities

Amenities	Carbon Monoxide Detectors, Ceiling 9 ft., Deck, Detectors Smoke, Parking-Visitor, Natural Gas BBQ Hookup
Parking	Double Garage Attached

Interior

Interior Features	ensuite bathroom
Appliances	Dishwasher-Built-In, Dryer, Garage Control, Garage Opener, Refrigerator, Stove-Electric, Washer, Window Coverings
Heating	Forced Air-1, Natural Gas
Stories	3
Has Basement	Yes
Basement	None, No Basement

Exterior

Exterior	Wood, Vinyl
Exterior Features	Low Maintenance Landscape, Playground Nearby, Public Transportation, Schools, Shopping Nearby
Roof	Asphalt Shingles
Construction	Wood, Vinyl
Foundation	Concrete Perimeter

Additional Information

Date Listed	July 7th, 2025
Days on Market	24
Zoning	Zone 28
Condo Fee	\$232

DATA IS DEEMED RELIABLE BUT IS NOT GUARANTEED ACCURATE BY THE REALTORS® ASSOCIATION OF EDMONTON. COPYRIGHT 2025 BY THE REALTORS® ASSOCIATION OF EDMONTON. ALL RIGHTS RESERVED.Trademarks are owned or controlled by the Canadian Real Estate Association (CREA) and identify real estate professionals who are members of CREA (REALTOR®, REALTORS®) and/or the quality of services they provide (MLS®, Multiple Listing Service®)

Listing information last updated on July 31st, 2025 at 4:02am MDT