

\$195,000 - 104 9519 160 Avenue, Edmonton

MLS® #E4442561

\$195,000

2 Bedroom, 2.00 Bathroom, 839 sqft

Condo / Townhouse on 0.00 Acres

Eaux Claires, Edmonton, AB

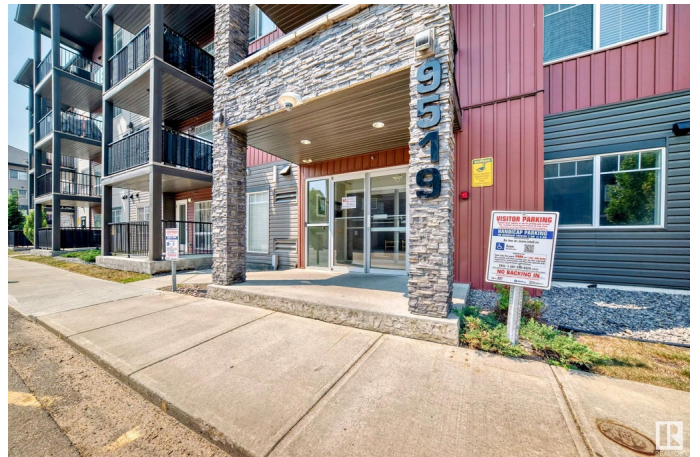
Excellent Location! This Stunning 2-bedroom Condo situated in the Desirable Community of Eaux Claires offers you a Great Lifestyle with only Steps to all amenities/ETS/Save On Foods/Shopping C/Restaurants/Medical Clinics/Park, the list goes on.....This home offers 2 Bedrooms, 2 Bathrooms & an Underground Heated Parking Stall. Features Open Concept layout, Bright Living room with Laminate Floorings, In floor Heating Floorings throughout. Patio door to a Good-sized Patio, where you can enjoy Summer BBQ. Breakfast Nook adjacent to Spacious Kitchen with Modern Kitchen Cabinets, Nice Backsplash Tiles, Quartz Countertops & Stainless Steel Appliances. 2 Sizable Bedrooms. Large Master Bedroom comes with Walk-through Closet & a 3pc En-suite Bathroom. Additional 4 piece Bathroom for Bedroom #2. In-suite Laundry with White-color Stackable Washer & Dryer. Nu Air Ventilation System. Title Underground Parking Stall. Easy access to School/Henday & 97 Street. Quick possession available. Just move-in & enjoy!

Built in 2014

Essential Information

MLS® # E4442561

Price \$195,000



Bedrooms	2
Bathrooms	2.00
Full Baths	2
Square Footage	839
Acres	0.00
Year Built	2014
Type	Condo / Townhouse
Sub-Type	Lowrise Apartment
Style	Single Level Apartment
Status	Active

Community Information

Address	104 9519 160 Avenue
Area	Edmonton
Subdivision	Eaux Claires
City	Edmonton
County	ALBERTA
Province	AB
Postal Code	T5Z 0N1

Amenities

Amenities	Intercom, Patio
Parking Spaces	1
Parking	Heated, Underground

Interior

Interior Features	ensuite bathroom
Appliances	Dishwasher-Built-In, Microwave Hood Fan, Refrigerator, Stacked Washer/Dryer, Stove-Electric, Curtains and Blinds
Heating	In Floor Heat System, Natural Gas
# of Stories	4
Stories	1
Has Basement	Yes
Basement	None, No Basement

Exterior

Exterior	Wood, Stone, Vinyl
Exterior Features	Playground Nearby, Public Transportation, Schools, Shopping Nearby
Roof	Asphalt Shingles

Construction	Wood, Stone, Vinyl
Foundation	Concrete Perimeter

School Information

Elementary	Florence Hallock K-9
------------	----------------------

Additional Information

Date Listed	June 15th, 2025
Days on Market	46
Zoning	Zone 28
Condo Fee	\$475

DATA IS DEEMED RELIABLE BUT IS NOT GUARANTEED ACCURATE BY THE REALTORS® ASSOCIATION OF EDMONTON. COPYRIGHT 2025 BY THE REALTORS® ASSOCIATION OF EDMONTON. ALL RIGHTS RESERVED.Trademarks are owned or controlled by the Canadian Real Estate Association (CREA) and identify real estate professionals who are members of CREA (REALTOR®, REALTORS®) and/or the quality of services they provide (MLS®, Multiple Listing Service®)

Listing information last updated on July 31st, 2025 at 2:17pm MDT