

\$259,000 - 449 1520 Hammond Gate Gate, Edmonton

MLS® #E4440063

\$259,000

2 Bedroom, 2.00 Bathroom, 1,144 sqft
Condo / Townhouse on 0.00 Acres

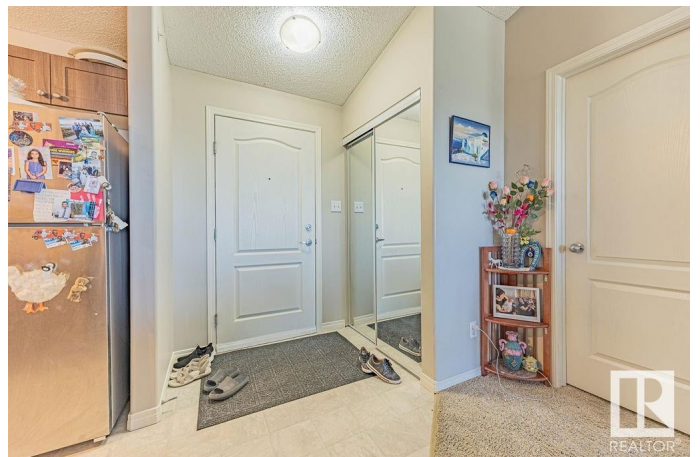
The Hamptons, Edmonton, AB

Spacious TOP FLOOR unit offering 1144sq ft with a fantastic layout! This 2 bed + DEN condo features VAULTED ceilings, a large patio, and thick underlay for added comfort. The massive primary bedroom includes an oversized walk-in closet and a private ensuite. The second bedroom and den are also generously sized. Enjoy a modern kitchen with tons of cupboard and counter space, stainless steel appliances, and extra storage. Comes with a TANDEM UNDERGROUND PARKING STALLS AND IN SUITE LAUNDRY Ideally located near the Anthony Henday, schools, parks, and all major amenities—this one checks all the boxes!

Built in 2008

Essential Information

| | |
|----------------|-------------------|
| MLS® # | E4440063 |
| Price | \$259,000 |
| Bedrooms | 2 |
| Bathrooms | 2.00 |
| Full Baths | 2 |
| Square Footage | 1,144 |
| Acres | 0.00 |
| Year Built | 2008 |
| Type | Condo / Townhouse |
| Sub-Type | Lowrise Apartment |



Style Single Level Apartment
Status Active

Community Information

Address 449 1520 Hammond Gate Gate
Area Edmonton
Subdivision The Hamptons
City Edmonton
County ALBERTA
Province AB
Postal Code T6M 0J4

Amenities

Amenities Deck, No Animal Home, No Smoking Home, Parking-Visitor, Storage-In-Suite
Parking Tandem, Underground

Interior

Interior Features ensuite bathroom
Appliances Dishwasher-Built-In, Dryer, Garage Control, Refrigerator, Stove-Electric, Washer, Window Coverings
Heating In Floor Heat System, Water
of Stories 4
Stories 1
Has Basement Yes
Basement None, No Basement

Exterior

Exterior Wood, Vinyl
Exterior Features Landscaped, Playground Nearby, Public Transportation, Schools, Shopping Nearby
Roof Asphalt Shingles
Construction Wood, Vinyl
Foundation Concrete Perimeter

Additional Information

Date Listed May 31st, 2025
Days on Market 16
Zoning Zone 58
Condo Fee \$665

DATA IS DEEMED RELIABLE BUT IS NOT GUARANTEED ACCURATE BY THE REALTORS® ASSOCIATION OF EDMONTON. COPYRIGHT 2025 BY THE REALTORS® ASSOCIATION OF EDMONTON. ALL RIGHTS RESERVED. Trademarks are owned or controlled by the Canadian Real Estate Association (CREA) and identify real estate professionals who are members of CREA (REALTOR®, REALTORS®) and/or the quality of services they provide (MLS®, Multiple Listing Service®)

Listing information last updated on June 16th, 2025 at 1:18pm MDT