

\$339,900 - 20 4470 Prowse Road, Edmonton

MLS® #E4439325

\$339,900

3 Bedroom, 2.50 Bathroom, 1,367 sqft

Condo / Townhouse on 0.00 Acres

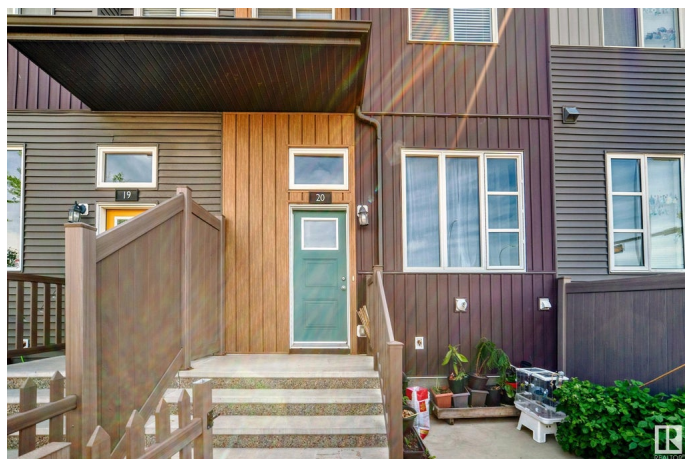
Paisley, Edmonton, AB

Welcome to this beautifully maintained 3-bedroom, 2.5-bathroom townhouse located in Paisley community. With over 1,300 square feet of thoughtfully designed living space, this home offers the perfect blend of comfort, style, and convenience. Step inside to discover an open-concept main floor with a spacious living room, and fine finishes, kitchen granite countertops, and a large center island—ideal for entertaining. Upstairs, the primary suite boasts a walk-in closet and a luxurious en-suite bathroom. Two additional bedrooms and a full bathroom complete the upper level, providing ample space for family, guests, or a home office. Additional highlights include an attached double car garage, low condo fee. Conveniently located near parks, school and shopping centre.

Built in 2017

Essential Information

MLS® #	E4439325
Price	\$339,900
Bedrooms	3
Bathrooms	2.50
Full Baths	2
Half Baths	1
Square Footage	1,367
Acres	0.00



Year Built	2017
Type	Condo / Townhouse
Sub-Type	Townhouse
Style	2 Storey
Status	Active

Community Information

Address	20 4470 Prowse Road
Area	Edmonton
Subdivision	Paisley
City	Edmonton
County	ALBERTA
Province	AB
Postal Code	T6W 3R5

Amenities

Amenities	No Smoking Home, Parking-Visitor, HRV System
Parking	Double Garage Attached

Interior

Interior Features	ensuite bathroom
Appliances	Dishwasher-Built-In, Dryer, Garage Opener, Hood Fan, Refrigerator, Stove-Electric, Washer, Window Coverings
Heating	Forced Air-1, Natural Gas
Stories	3
Has Basement	Yes
Basement	Partial, Partially Finished

Exterior

Exterior	Wood, Vinyl
Exterior Features	Airport Nearby, Back Lane, Fenced, Golf Nearby, Low Maintenance Landscape, Playground Nearby, Public Transportation, Schools, Shopping Nearby
Roof	Asphalt Shingles
Construction	Wood, Vinyl
Foundation	Concrete Perimeter

Additional Information

Date Listed	May 29th, 2025
Days on Market	32

Zoning	Zone 55
Condo Fee	\$234

DATA IS DEEMED RELIABLE BUT IS NOT GUARANTEED ACCURATE BY THE REALTORS® ASSOCIATION OF EDMONTON. COPYRIGHT 2025 BY THE REALTORS® ASSOCIATION OF EDMONTON. ALL RIGHTS RESERVED. Trademarks are owned or controlled by the Canadian Real Estate Association (CREA) and identify real estate professionals who are members of CREA (REALTOR®, REALTORS®) and/or the quality of services they provide (MLS®, Multiple Listing Service®)

Listing information last updated on June 30th, 2025 at 2:17pm MDT