

## \$420,000 - 1213 Gillespie Crescent, Edmonton

MLS® #E4439048

**\$420,000**

4 Bedroom, 3.00 Bathroom, 1,040 sqft

Single Family on 0.00 Acres

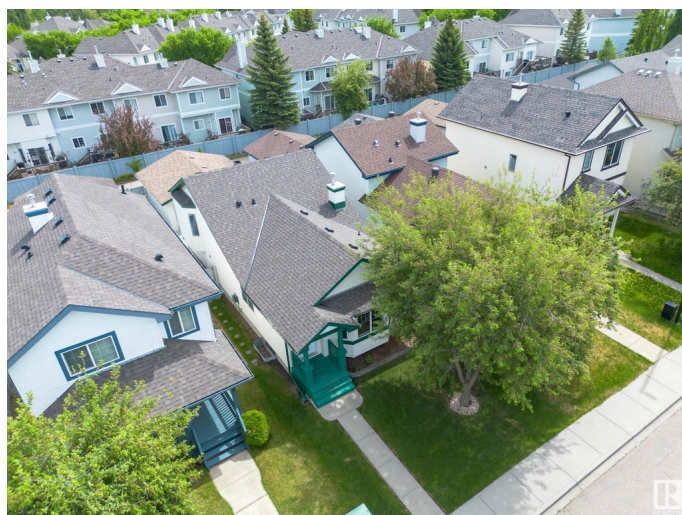
Glastonbury, Edmonton, AB

Charming HOME-2-LOVE in Glastonbury is ready to welcome your family. Set your sights on this 4-level spit home showcasing over 1985 sqft of living space with 4-bedrooms (2 upper-level, 2 lower-levels) & 3 full bathrooms. Situated in a cut de sac, tree-line street with west facing back yard for great summer sun & back entertaining deck. Steps away from walking paths & trails @ Guinevere Park & local amenities. Recent updated include new roof(2021), central A/C(2024) & luxury vinyl plank flooring. Beautiful natural light on the main floor with vaulted ceilings and huge windows. Kitchen is a great space with pantry and spacious dining area. The flex space that is perfect for a home office or kids play room. The third level is open with glass panels and features a cozy second living room with corner gas fireplace. The basement offers a large room, full bath and bar area. Fully fenced and oversized double garage complete this wonderful home! GREAT MUST SEE HOME!

Built in 2002

### Essential Information

MLS® #	E4439048
Price	\$420,000
Bedrooms	4
Bathrooms	3.00



Full Baths	3
Square Footage	1,040
Acres	0.00
Year Built	2002
Type	Single Family
Sub-Type	Detached Single Family
Style	4 Level Split
Status	Active

### Community Information

Address	1213 Gillespie Crescent
Area	Edmonton
Subdivision	Glastonbury
City	Edmonton
County	ALBERTA
Province	AB
Postal Code	T5T 6M5

### Amenities

Amenities	On Street Parking, Air Conditioner, Ceiling 9 ft., Deck, Detectors Smoke, Front Porch, Television Connection, Vaulted Ceiling, Vinyl Windows, Wet Bar
Parking	Double Garage Detached, Over Sized, Rear Drive Access

### Interior

Interior Features	ensuite bathroom
Appliances	Air Conditioning-Central, Dishwasher-Built-In, Dryer, Garage Control, Garage Opener, Refrigerator, Stove-Electric, Window Coverings
Heating	Forced Air-1, Natural Gas
Fireplace	Yes
Fireplaces	Corner, Insert, Mantel
Stories	4
Has Basement	Yes
Basement	Full, Finished

### Exterior

Exterior	Wood, Vinyl
Exterior Features	Back Lane, Fenced, Golf Nearby, Landscaped, Paved Lane, Playground Nearby, Public Transportation, Schools, Shopping Nearby

Roof	Asphalt Shingles
Construction	Wood, Vinyl
Foundation	Concrete Perimeter

**Additional Information**

Date Listed	May 29th, 2025
Days on Market	8
Zoning	Zone 58
HOA Fees	175
HOA Fees Freq.	Annually

DATA IS DEEMED RELIABLE BUT IS NOT GUARANTEED ACCURATE BY THE REALTORS® ASSOCIATION OF EDMONTON. COPYRIGHT 2025 BY THE REALTORS® ASSOCIATION OF EDMONTON. ALL RIGHTS RESERVED.Trademarks are owned or controlled by the Canadian Real Estate Association (CREA) and identify real estate professionals who are members of CREA (REALTOR®, REALTORS®) and/or the quality of services they provide (MLS®, Multiple Listing Service®)

Listing information last updated on June 6th, 2025 at 2:17pm MDT