

\$399,900 - 14406 110a Avenue, Edmonton

MLS® #E4438734

\$399,900

3 Bedroom, 2.00 Bathroom, 969 sqft

Single Family on 0.00 Acres

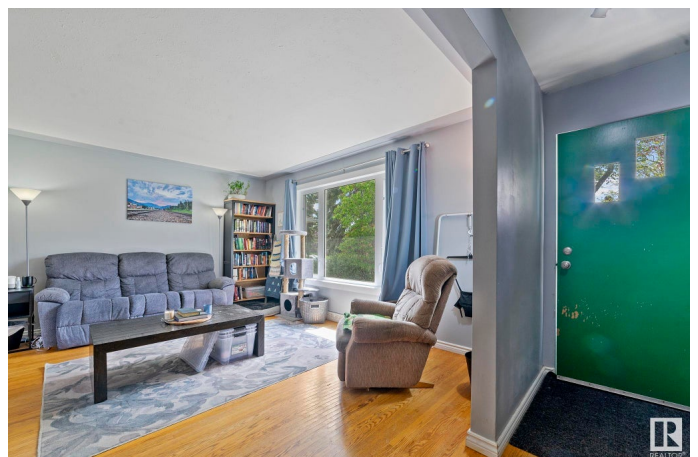
McQueen, Edmonton, AB

Get into home ownership in one of Edmonton's growing central communities! This beautiful bungalow comes in just under 1000 sq ft. Big front living room with loads of natural light. Large dining area with plenty of space to host family and friends! NEW KITCHEN with spotless cabinets, lots of storage and new appliances! Master bedroom with great hardwood floors. 2nd bedroom is perfect for guests, kids or a home office. Basement has a SECOND KITCHEN for future use. Large family room space. Big bedroom with large ensuite too! Lots of updates. New windows, furnace, electrical and more! Single detached garage is great for a vehicle or storing all things outdoors! Fully fenced yard! Great location in west-central Edmonton! Easy access downtown or to the Yellowhead to get wherever you need to go! LOT IS 50'x120' with loads of potential for future development!!!

Built in 1954

Essential Information

MLS® #	E4438734
Price	\$399,900
Bedrooms	3
Bathrooms	2.00
Full Baths	2
Square Footage	969



Acres	0.00
Year Built	1954
Type	Single Family
Sub-Type	Detached Single Family
Style	Bungalow
Status	Active

Community Information

Address	14406 110a Avenue
Area	Edmonton
Subdivision	McQueen
City	Edmonton
County	ALBERTA
Province	AB
Postal Code	T5N 1J8

Amenities

Amenities	Detectors Smoke, No Smoking Home, Vinyl Windows
Parking	Single Garage Detached

Interior

Interior Features	ensuite bathroom
Appliances	Dishwasher-Built-In, Dryer, Washer, Window Coverings, Refrigerators-Two, Stoves-Two
Heating	Forced Air-1, Natural Gas
Stories	2
Has Basement	Yes
Basement	Full, Finished

Exterior

Exterior	Wood, Stucco
Exterior Features	Back Lane, Fenced, Flat Site, Landscaped, Level Land, Shopping Nearby
Roof	Asphalt Shingles
Construction	Wood, Stucco
Foundation	Concrete Perimeter

Additional Information

Date Listed	May 27th, 2025
-------------	----------------

Days on Market 20

Zoning Zone 21

DATA IS DEEMED RELIABLE BUT IS NOT GUARANTEED ACCURATE BY THE REALTORS® ASSOCIATION OF EDMONTON. COPYRIGHT 2025 BY THE REALTORS® ASSOCIATION OF EDMONTON. ALL RIGHTS RESERVED. Trademarks are owned or controlled by the Canadian Real Estate Association (CREA) and identify real estate professionals who are members of CREA (REALTOR®, REALTORS®) and/or the quality of services they provide (MLS®, Multiple Listing Service®)

Listing information last updated on June 16th, 2025 at 9:02pm MDT