

Courtesy Of Henry Han Of Century 21 Masters

# \$169,900 - 2204 320 Clareview Station Drive, Edmonton

MLS® #E4438560

**\$169,900**

2 Bedroom, 2.00 Bathroom, 840 sqft

Condo / Townhouse on 0.00 Acres

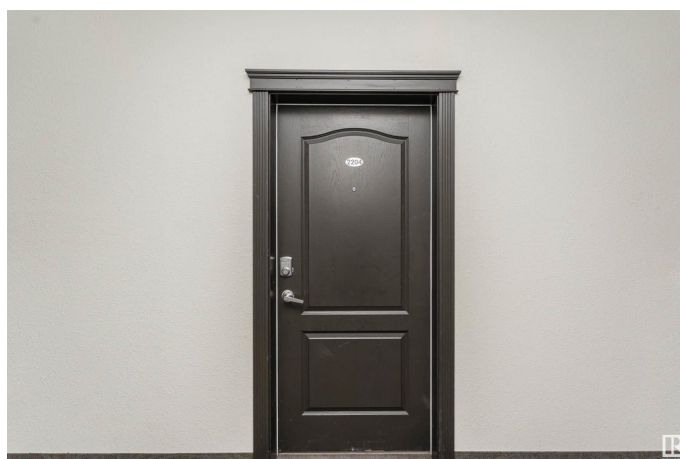
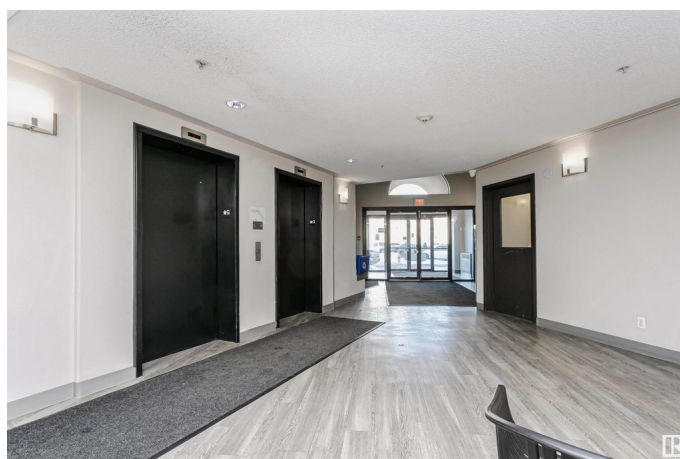
Clareview Town Centre, Edmonton, AB

Discover this well-maintained 840 sq ft, 2-bedroom, 2-bathroom condo in Clareview Town Centre community. This exquisite condo features an open concept kitchen with dark laminate countertops and classic white cabinetry with ample upper and lower storage. The bright and inviting living room opens onto a spacious balcony, ideal for relaxation and entertaining. The master bedroom boasts a walk-through closet leading to a 4-piece ensuite, while an additional bedroom and a 4-piece bathroom complete the living space. Enjoy the convenience of being close to schools, shopping, and all amenities, with easy access to the Henday and major transit.

Built in 2007

## Essential Information

MLS® #	E4438560
Price	\$169,900
Bedrooms	2
Bathrooms	2.00
Full Baths	2
Square Footage	840
Acres	0.00
Year Built	2007
Type	Condo / Townhouse
Sub-Type	Lowrise Apartment



Style Single Level Apartment  
Status Active

### Community Information

Address 2204 320 Clareview Station Drive  
Area Edmonton  
Subdivision Clareview Town Centre  
City Edmonton  
County ALBERTA  
Province AB  
Postal Code T5Y 0E5

### Amenities

Amenities Detectors Smoke, No Smoking Home, Security Door  
Parking Spaces 2  
Parking 2 Outdoor Stalls

### Interior

Interior Features ensuite bathroom  
Appliances Dishwasher-Built-In, Hood Fan, Refrigerator, Stacked Washer/Dryer, Stove-Electric, Window Coverings  
Heating Hot Water, Natural Gas  
# of Stories 4  
Stories 1  
Has Basement Yes  
Basement None, No Basement

### Exterior

Exterior Wood, Vinyl  
Exterior Features Playground Nearby, Schools, Shopping Nearby  
Roof Asphalt Shingles  
Construction Wood, Vinyl  
Foundation Concrete Perimeter

### Additional Information

Date Listed May 26th, 2025  
Days on Market 22  
Zoning Zone 35  
Condo Fee \$442

DATA IS DEEMED RELIABLE BUT IS NOT GUARANTEED ACCURATE BY THE REALTORS® ASSOCIATION OF EDMONTON. COPYRIGHT 2025 BY THE REALTORS® ASSOCIATION OF EDMONTON. ALL RIGHTS RESERVED. Trademarks are owned or controlled by the Canadian Real Estate Association (CREA) and identify real estate professionals who are members of CREA (REALTOR®, REALTORS®) and/or the quality of services they provide (MLS®, Multiple Listing Service®)

Listing information last updated on June 17th, 2025 at 4:32pm MDT