

# \$415,800 - 1247 Gillespie Crescent, Edmonton

MLS® #E4438228

**\$415,800**

3 Bedroom, 2.00 Bathroom, 1,096 sqft  
Single Family on 0.00 Acres

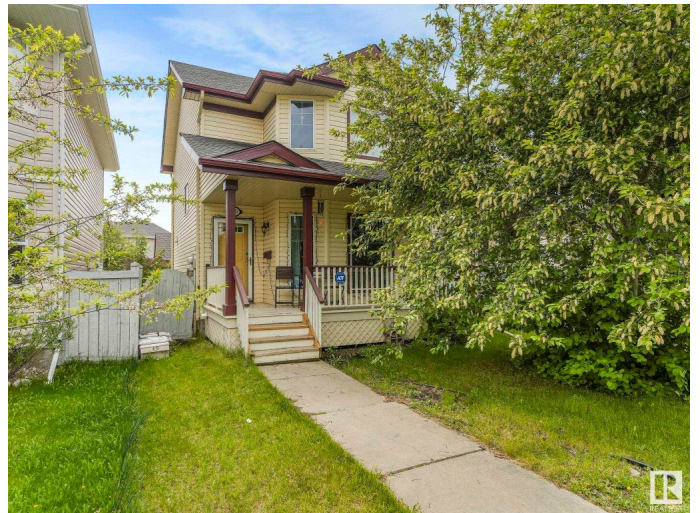
Glastonbury, Edmonton, AB

Don't miss out on this great opportunity !!Fantastic t home located in heart of Glastonbury that offers three upper level three bedrooms with one full bath and two 2 pcs bathrooms plus a fully finished basement .The main living room has a a large picture window overlooking the front porch. the spacious kitchen has plenty of cabinets and a large pantry plus eating area. The primary bedroom has plenty pf room to fit a king size bed and a large walk-in closet. Two more generous rooms ideal for a growing family.The fully finished basement boasts a second family room., A Rec room and a 2 pc bath.The back yard has well large Deck plus a double detached garage .Recent upgrades includes a newer roof, new furnace with A/c Solid Home with good bones in need of a little TLC, paint and flooring.

Built in 2002

## Essential Information

MLS® #	E4438228
Price	\$415,800
Bedrooms	3
Bathrooms	2.00
Full Baths	1
Half Baths	2
Square Footage	1,096



Acres	0.00
Year Built	2002
Type	Single Family
Sub-Type	Detached Single Family
Style	2 Storey
Status	Active

### **Community Information**

Address	1247 Gillespie Crescent
Area	Edmonton
Subdivision	Glastonbury
City	Edmonton
County	ALBERTA
Province	AB
Postal Code	T5T 6M6

### **Amenities**

Amenities	Air Conditioner, Deck
Parking	Double Garage Detached

### **Interior**

Appliances	Garage Opener, Refrigerator, Stove-Electric, Dryer-Two, Washers-Two, Microwave Hood Fan-Two
Heating	Forced Air-1, Natural Gas
Stories	2
Has Basement	Yes
Basement	Full, Partially Finished

### **Exterior**

Exterior	Wood, Vinyl
Exterior Features	Landscaped, Park/Reserve, Playground Nearby, Public Transportation
Roof	Asphalt Shingles
Construction	Wood, Vinyl
Foundation	Concrete Perimeter

### **Additional Information**

Date Listed	May 21st, 2025
Days on Market	3
Zoning	Zone 58

DATA IS DEEMED RELIABLE BUT IS NOT GUARANTEED ACCURATE BY THE REALTORS® ASSOCIATION OF EDMONTON. COPYRIGHT 2025 BY THE REALTORS® ASSOCIATION OF EDMONTON. ALL RIGHTS RESERVED. Trademarks are owned or controlled by the Canadian Real Estate Association (CREA) and identify real estate professionals who are members of CREA (REALTOR®, REALTORS®) and/or the quality of services they provide (MLS®, Multiple Listing Service®)

Listing information last updated on May 24th, 2025 at 5:17am MDT