

\$669,000 - 22 Dillworth Crescent, Spruce Grove

MLS® #E4438167

\$669,000

4 Bedroom, 3.50 Bathroom, 2,535 sqft

Single Family on 0.00 Acres

Deer Park_SPGR, Spruce Grove, AB

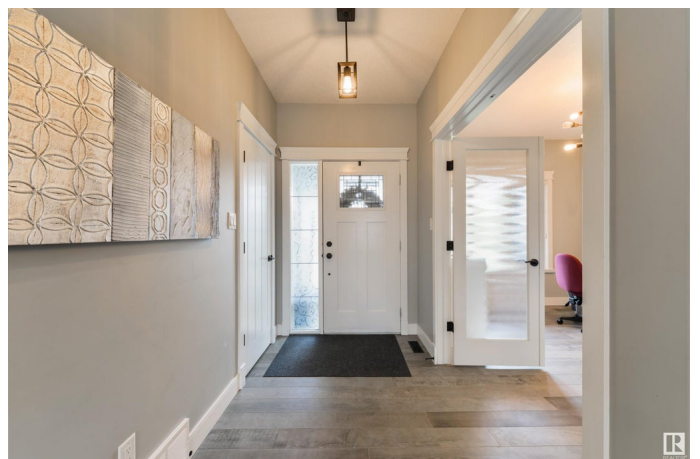
Experience luxury living in this CUSTOM-BUILT home! Featuring a wonderful floor plan, the main level highlights 9'™ ceilings, hardwood flooring, spacious office/den, cozy living room w/ gas fireplace, & a Chef's™ kitchen equipped w/ stone counters, stainless appliances, center island, separate dinette, & walk-through BUTLER's™ pantry leading to the mudroom & HEATED dbl-attached garage. Upstairs you'll find a bonus room, 5pc bath, & three sizeable bedrooms (each w/ their own walk-in closets), including the owner's™ suite which showcases French doors, & a 5pc spa-inspired ensuite w/ soaker tub, oversized tiled shower, & a fabulous walk-in closet w/ direct access to the laundry room. The basement is fully-finished & features a 4th bedroom (w/ walk-in closet), 3pc bath, & rec room (w/ future wet bar potential, if desired). Complete w/ A/C, an exterior deck, & a beautifully landscaped & fenced yard, this home offers a seamless blend of style, space, & functionality in one of Spruce Grove's™ most sought-after areas.

Built in 2014

Essential Information

MLS® # E4438167

Price \$669,000



Bedrooms	4
Bathrooms	3.50
Full Baths	3
Half Baths	1
Square Footage	2,535
Acres	0.00
Year Built	2014
Type	Single Family
Sub-Type	Detached Single Family
Style	2 Storey
Status	Active

Community Information

Address	22 Dillworth Crescent
Area	Spruce Grove
Subdivision	Deer Park_SPGR
City	Spruce Grove
County	ALBERTA
Province	AB
Postal Code	T7X 0E6

Amenities

Amenities	Air Conditioner, Ceiling 9 ft., Deck, No Smoking Home, See Remarks
Parking	Double Garage Attached, Heated, Over Sized

Interior

Interior Features	ensuite bathroom
Appliances	Alarm/Security System, Dishwasher-Built-In, Dryer, Garage Control, Garage Opener, Hood Fan, Oven-Microwave, Refrigerator, Storage Shed, Stove-Gas, Washer, Window Coverings, Wine/Beverage Cooler
Heating	Forced Air-1, Natural Gas
Fireplace	Yes
Fireplaces	See Remarks
Stories	3
Has Basement	Yes
Basement	Full, Finished

Exterior

Exterior	Wood, Stone, Vinyl
----------	--------------------

Exterior Features	Fenced, Flat Site, Landscaped, Playground Nearby, Public Transportation, Schools, Shopping Nearby, See Remarks
Roof	Asphalt Shingles
Construction	Wood, Stone, Vinyl
Foundation	Concrete Perimeter

Additional Information

Date Listed	May 23rd, 2025
Days on Market	24
Zoning	Zone 91

DATA IS DEEMED RELIABLE BUT IS NOT GUARANTEED ACCURATE BY THE REALTORS® ASSOCIATION OF EDMONTON. COPYRIGHT 2025 BY THE REALTORS® ASSOCIATION OF EDMONTON. ALL RIGHTS RESERVED.Trademarks are owned or controlled by the Canadian Real Estate Association (CREA) and identify real estate professionals who are members of CREA (REALTOR®, REALTORS®) and/or the quality of services they provide (MLS®, Multiple Listing Service®)

Listing information last updated on June 16th, 2025 at 2:48pm MDT