

Courtesy Of Sarah J Leib Of RE/MAX River City

\$534,900 - 19330 26a Avenue, Edmonton

MLS® #E4436902

\$534,900

3 Bedroom, 2.50 Bathroom, 1,656 sqft

Single Family on 0.00 Acres

The Uplands, Edmonton, AB

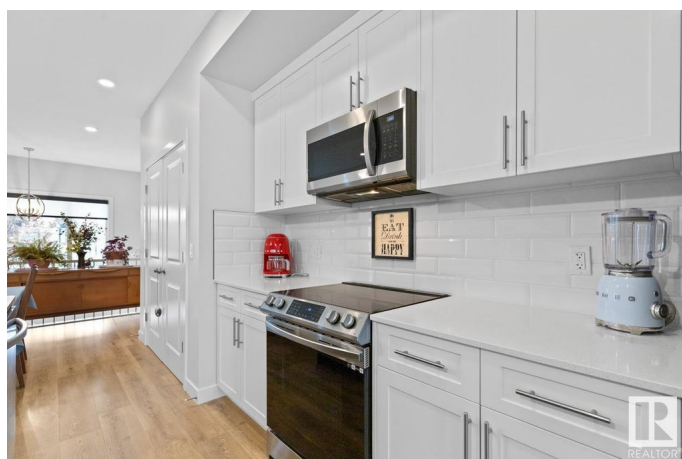
UNIQUE UPLANDS! This detached, 3 Bedroom, 3 Bath property with a rear-detached **DOUBLE GARAGE** offers a **BRIGHT & SUNNY** floor plan. The Kitchen includes a large **ISLAND**, **QUARTZ COUNTERTOPS**, **Stainless Steel Appliances**, **TWO-TONE CABINETS** & a **Pantry**. Main floor is carpet-free. Upstairs, the Primary Bedroom fits a king-size bed plus a **Walk-In Closet & ENSUITE w/ TWO SINKS / VANITIES**. Two additional, ample sized Bedrooms are found on this level. Downstairs features an open-to-below section which has a **FINISHED REC ROOM**. The remainder of the lower level is spacious & includes a rough-in bath & window for future development. **BONUS: 9' CEILINGS**, **Custom Blinds**, **Custom Built-In Closet Organizers**, **Transom Windows** & **UPPER FLOOR LAUNDRY**. The Uplands at Riverview community is conveniently located near the Henday Drive with parks, playgrounds, walking trails & nearby amenities such as schools, recreation facilities and shopping. **Turn-Key Home!**

Built in 2022

Essential Information

MLS® # E4436902

Price \$534,900



| | |
|----------------|------------------------|
| Bedrooms | 3 |
| Bathrooms | 2.50 |
| Full Baths | 2 |
| Half Baths | 1 |
| Square Footage | 1,656 |
| Acres | 0.00 |
| Year Built | 2022 |
| Type | Single Family |
| Sub-Type | Detached Single Family |
| Style | 2 Storey |
| Status | Active |

Community Information

| | |
|-------------|------------------|
| Address | 19330 26a Avenue |
| Area | Edmonton |
| Subdivision | The Uplands |
| City | Edmonton |
| County | ALBERTA |
| Province | AB |
| Postal Code | T6M 1L2 |

Amenities

| | |
|-----------|---|
| Amenities | Ceiling 9 ft., Closet Organizers, Detectors Smoke |
| Parking | Double Garage Detached |

Interior

| | |
|-------------------|--|
| Interior Features | ensuite bathroom |
| Appliances | Dishwasher-Built-In, Dryer, Microwave Hood Fan, Refrigerator, Stove-Electric, Washer, Window Coverings |
| Heating | Forced Air-1, Natural Gas |
| Stories | 3 |
| Has Basement | Yes |
| Basement | Full, Partially Finished |

Exterior

| | |
|-------------------|---|
| Exterior | Wood, Brick, Vinyl |
| Exterior Features | Back Lane, Fenced, Flat Site, Landscaped, Low Maintenance Landscape, Paved Lane, Playground Nearby, Public Transportation, Schools, Shopping Nearby |

| | |
|--------------|--------------------|
| Roof | Asphalt Shingles |
| Construction | Wood, Brick, Vinyl |
| Foundation | Concrete Perimeter |

School Information

| | |
|------------|--------------------------|
| Elementary | Centennial/Good Shepherd |
| Middle | S B Smith/H E Beriault |
| High | Jasper Place/St O Romero |

Additional Information

| | |
|----------------|----------------|
| Date Listed | May 16th, 2025 |
| Days on Market | 38 |
| Zoning | Zone 57 |

DATA IS DEEMED RELIABLE BUT IS NOT GUARANTEED ACCURATE BY THE REALTORS® ASSOCIATION OF EDMONTON. COPYRIGHT 2025 BY THE REALTORS® ASSOCIATION OF EDMONTON. ALL RIGHTS RESERVED. Trademarks are owned or controlled by the Canadian Real Estate Association (CREA) and identify real estate professionals who are members of CREA (REALTOR®, REALTORS®) and/or the quality of services they provide (MLS®, Multiple Listing Service®)

Listing information last updated on June 23rd, 2025 at 1:48pm MDT