

## \$405,000 - 67 Deer Park Blvd, Spruce Grove

MLS® #E4434961

**\$405,000**

4 Bedroom, 2.00 Bathroom, 867 sqft

Single Family on 0.00 Acres

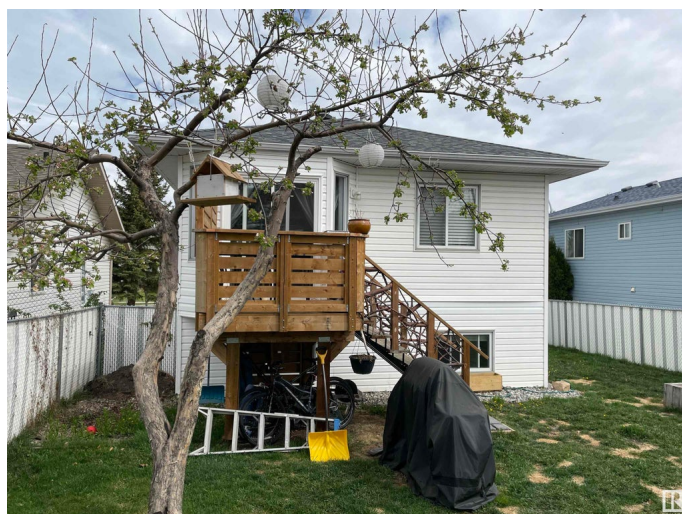
Deer Park\_SPGR, Spruce Grove, AB

This bilevel in the wonderful area of Deer Park has one larger bedroom with 3 pce ensuite on the main floor and 3 bedrooms on the lower level as well as a family room and utility area. Many renovations have been done such as new kitchen cabinets, tile splash, centre island, storage cabinets and more. A woodburning stove and newer appliances complete the package. A newer stack washer and dryer as well as a hot water tank were put in about 2 years ago. The double front drive garage has built in work shelves and a rear man door to the rearyard. Outside is an all fenced and landscaped yard with a new deck off the kitchen, an Apple and Plum tree as well as a raspberry patch. 5 minutes and your on the freeway. And best of all a new roof was installed in 2019.

Built in 1993

### Essential Information

MLS® #	E4434961
Price	\$405,000
Bedrooms	4
Bathrooms	2.00
Full Baths	2
Square Footage	867
Acres	0.00
Year Built	1993



Type	Single Family
Sub-Type	Detached Single Family
Style	Bi-Level
Status	Active

### Community Information

Address	67 Deer Park Blvd
Area	Spruce Grove
Subdivision	Deer Park_SPGR
City	Spruce Grove
County	ALBERTA
Province	AB
Postal Code	T7X 3J6

### Amenities

Amenities	Deck, Hot Water Natural Gas
Parking	Double Garage Attached

### Interior

Interior Features	ensuite bathroom
Appliances	Dishwasher-Built-In, Dryer, Garage Opener, Hood Fan, Refrigerator, Stacked Washer/Dryer, Stove-Gas, Washer
Heating	Forced Air-1, Natural Gas
Fireplaces	Woodstove
Stories	2
Has Basement	Yes
Basement	Full, Finished

### Exterior

Exterior	Wood, Vinyl
Exterior Features	Fenced, Flat Site, Fruit Trees/Shrubs, Landscaped, No Back Lane, Shopping Nearby
Roof	Asphalt Shingles
Construction	Wood, Vinyl
Foundation	Concrete Perimeter

### Additional Information

Date Listed	May 6th, 2025
Days on Market	42

## Zoning

## Zone 91

DATA IS DEEMED RELIABLE BUT IS NOT GUARANTEED ACCURATE BY THE REALTORS® ASSOCIATION OF EDMONTON. COPYRIGHT 2025 BY THE REALTORS® ASSOCIATION OF EDMONTON. ALL RIGHTS RESERVED. Trademarks are owned or controlled by the Canadian Real Estate Association (CREA) and identify real estate professionals who are members of CREA (REALTOR®, REALTORS®) and/or the quality of services they provide (MLS®, Multiple Listing Service®)

Listing information last updated on June 17th, 2025 at 12:17am MDT