

\$524,900 - 7416 Creighton Place, Edmonton

MLS® #E4434451

\$524,900

4 Bedroom, 3.50 Bathroom, 1,550 sqft

Single Family on 0.00 Acres

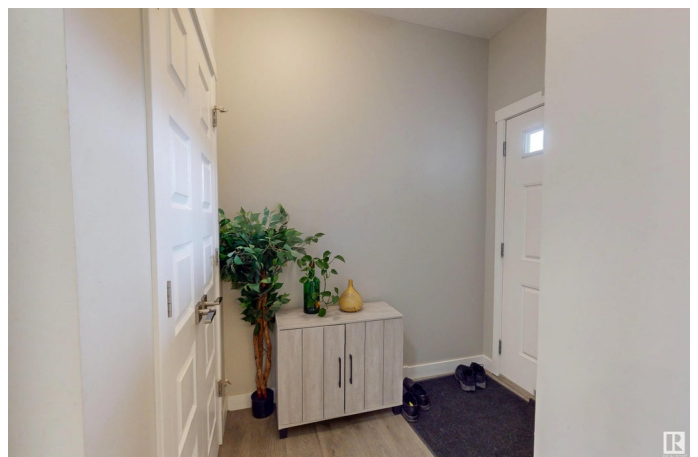
Chappelle Area, Edmonton, AB

Welcome to Chappelle!! A detached home with a front attached garage offering convenient access from 41 Ave, has everything any buyer would need. Good sized 3 bedrooms, 2 full baths and a decent sized Bonus Room complete the upper level. All bedrooms are big enough to accommodate King Size beds. Main floor has a cozy Living Room with a Fireplace, a kitchen offering SS appliances and a gas stove. The Dining Room overlooks the backyard. The Fully Finished Basement has a SECOND KITCHEN, SECOND LIVING ROOM and a HUGE Bedroom with an en-suite. This property is suitable to any buyer or an investor.

Built in 2017

Essential Information

MLS® #	E4434451
Price	\$524,900
Bedrooms	4
Bathrooms	3.50
Full Baths	3
Half Baths	1
Square Footage	1,550
Acres	0.00
Year Built	2017
Type	Single Family
Sub-Type	Detached Single Family



Style	2 Storey
Status	Active

Community Information

Address	7416 Creighton Place
Area	Edmonton
Subdivision	Chappelle Area
City	Edmonton
County	ALBERTA
Province	AB
Postal Code	T6W 3Z4

Amenities

Amenities	No Animal Home, No Smoking Home
Parking	Over Sized, Single Garage Attached

Interior

Interior Features	ensuite bathroom
Appliances	Air Conditioning-Central, Dishwasher-Built-In, Dryer, Garage Control, Garage Opener, Hood Fan, Stove-Electric, Stove-Gas, Washer, Refrigerators-Two
Heating	Forced Air-1, Natural Gas
Fireplace	Yes
Fireplaces	Glass Door
Stories	3
Has Basement	Yes
Basement	Full, Finished

Exterior

Exterior	Wood, Stone, Vinyl
Exterior Features	Landscaped, Public Transportation, Schools, Shopping Nearby
Roof	Asphalt Shingles
Construction	Wood, Stone, Vinyl
Foundation	Concrete Perimeter

Additional Information

Date Listed	May 4th, 2025
Days on Market	10
Zoning	Zone 55

HOA Fees 105

HOA Fees Freq. Annually

DATA IS DEEMED RELIABLE BUT IS NOT GUARANTEED ACCURATE BY THE REALTORS® ASSOCIATION OF EDMONTON. COPYRIGHT 2025 BY THE REALTORS® ASSOCIATION OF EDMONTON. ALL RIGHTS RESERVED. Trademarks are owned or controlled by the Canadian Real Estate Association (CREA) and identify real estate professionals who are members of CREA (REALTOR®, REALTORS®) and/or the quality of services they provide (MLS®, Multiple Listing Service®)

Listing information last updated on May 14th, 2025 at 2:02pm MDT