

## \$419,900 - 7936 89 Avenue, Edmonton

MLS® #E4432290

**\$419,900**

4 Bedroom, 2.00 Bathroom, 1,101 sqft

Single Family on 0.00 Acres

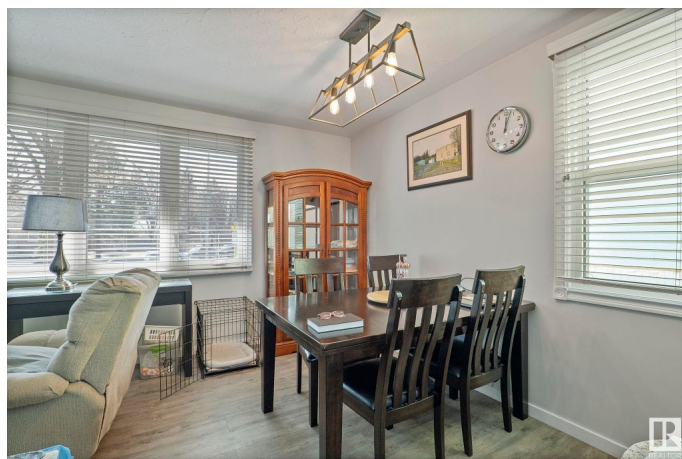
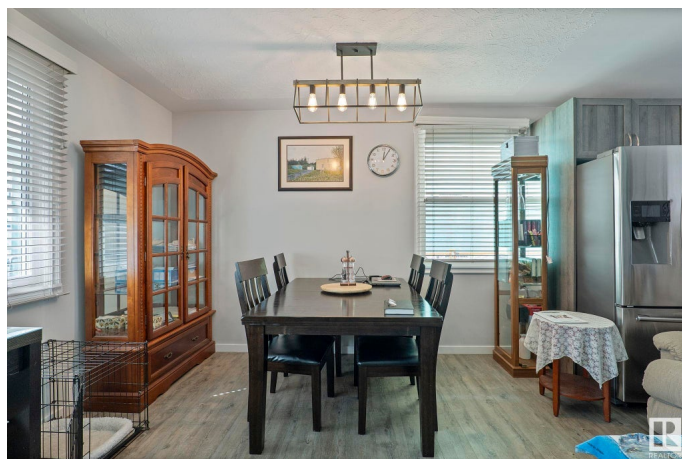
Idylwylde, Edmonton, AB

Welcome to this renovated over 1100 Sq. Ft. bungalow in desirous Idylwylde community. The homes has completely new kitchen cabinets, appliances , sink, counter top. New flooring through out. Located on main floor nice size primary bedroom with two others a good size and a fully renovated 3 pc. Bath. Newer windows throughout. Basement has large bedroom with a newly renovated 3 Pc. Bath and nice size recreation room. Nice comfortable rear deck and nice size yard. Large storage shed. Oversized single detached garage fully insulated. Storage Calore in this home, no wasted space for your all your necessary storage.

Built in 1954

### Essential Information

MLS® #	E4432290
Price	\$419,900
Bedrooms	4
Bathrooms	2.00
Full Baths	2
Square Footage	1,101
Acres	0.00
Year Built	1954
Type	Single Family
Sub-Type	Detached Single Family



Style	Bungalow
Status	Active

### Community Information

Address	7936 89 Avenue
Area	Edmonton
Subdivision	Idylwylde
City	Edmonton
County	ALBERTA
Province	AB
Postal Code	T6C 1N5

### Amenities

Amenities	Deck, Fire Pit, No Smoking Home
Parking	Over Sized, Single Garage Detached

### Interior

Appliances	Dishwasher-Built-In, Dryer, Garage Control, Garage Opener, Microwave Hood Fan, Refrigerator, Storage Shed, Stove-Electric, Washer, Window Coverings, See Remarks
Heating	Forced Air-1, See Remarks, Natural Gas
Stories	2
Has Basement	Yes
Basement	Full, Finished

### Exterior

Exterior	Wood, Stucco, Vinyl
Exterior Features	Flat Site, Fruit Trees/Shrubs, Playground Nearby, Public Transportation, Schools, Shopping Nearby, See Remarks
Roof	Asphalt Shingles
Construction	Wood, Stucco, Vinyl
Foundation	Concrete Perimeter

### Additional Information

Date Listed	April 23rd, 2025
Days on Market	9
Zoning	Zone 18

DATA IS DEEMED RELIABLE BUT IS NOT GUARANTEED ACCURATE BY THE REALTORS® ASSOCIATION OF EDMONTON. COPYRIGHT 2025 BY THE REALTORS® ASSOCIATION OF EDMONTON. ALL RIGHTS RESERVED. Trademarks are owned or controlled by the Canadian Real Estate Association (CREA) and identify real

estate professionals who are members of CREA (REALTOR®®, REALTORS®®) and/or the quality of services they provide (MLS®®, Multiple Listing Service®®)

Listing information last updated on May 2nd, 2025 at 5:17pm MDT