

\$265,000 - #23 451 Hyndman Cr Nw, Edmonton

MLS® #E4430424

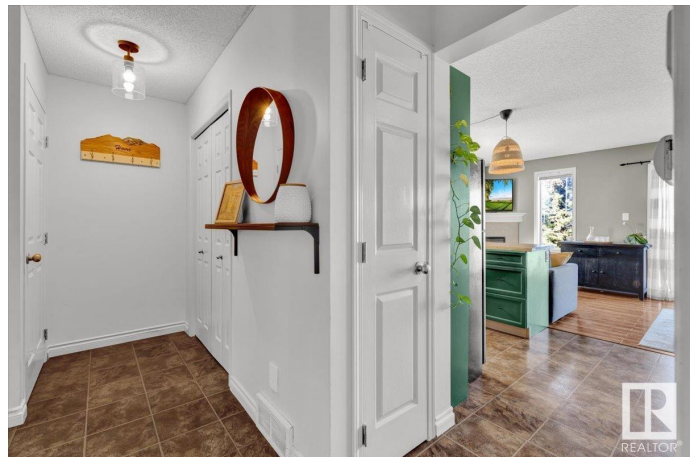
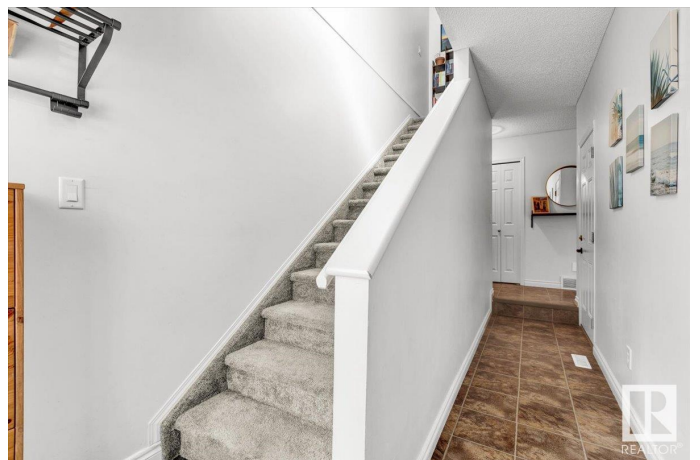
\$265,000

2 Bedroom, 3.00 Bathroom, 1,238 sqft

Single Family on 0.09 Acres

Canon Ridge, Edmonton, Alberta

END UNIT TOWNHOUSE BACKING A GREEN SPACE! Welcome to Canon ridge! A family friendly community that has walking trails, playgrounds & dog parks! Upon entering the home, you're sure to love the open concept floor plan. The large windows along the back & side of the home flood the space w/ natural light. The kitchen has refinished kitchen cabinetry, new countertops, new backsplash, some newer appliances, & loads of counter space for cooking. The kitchen opens up to the living room w/ a corner gas fireplace, & a stunning view overlooking a green space w/ NO DIRECT NEIGHBOURS BEHIND! Upstairs has 2 bedrooms, each w/ their own walk-in closet. The primary room has a 3pc ensuite. The basement is unfinished & awaiting your personal touch. Other features include an oversized single garage w/ extra room for storage, newer washer/dryer, central vac, some new light fixtures, a remodelled 2pc bathroom on the main floor, & a private deck on the back. This complex is PET FRIENDLY! For more details please visit the REALTO (id:36535)



Built in 2005

Essential Information

Listing #	E4430424
Price	\$265,000
Bedrooms	2

Bathrooms	3.00
Half Baths	1
Square Footage	1,238
Acres	0.09
Year Built	2005
Type	Single Family
Sub-Type	Condominium/Strata

Community Information

Address	#23 451 Hyndman Cr Nw
Subdivision	Canon Ridge
City	Edmonton
Province	Alberta
Postal Code	T5A5J3

Amenities

Amenities	Golf Course, Playground, Public Transit, Shopping
Features	Park/reserve
Parking Spaces	2
Parking	Attached Garage
# of Garages	1

Interior

Appliances	Dishwasher, Dryer, Garage door opener remote(s), Garage door opener, Hood Fan, Refrigerator, Stove, Washer, Window Coverings	
Heating	Forced air	
Fireplace	Yes	
Fireplace Fuel	Gas	
Fireplace Type	Corner	
# of Stories	2	
Has Basement	Yes	
Basement Type	Full (Unfinished)	
Basement Development	Unfinished	

Listing Details

Listing Office	Courtesy Of Haley Streu and Dwight Streu Of MaxWell Polaris
----------------	---



The trademarks MLS®, Multiple Listing Service® and the associated logos are owned by The Canadian Real Estate Association (CREA) and identify the quality of services provided by real estate professionals who are members of CREA. REALTOR®. Member of CREA and more.

Listing information last updated on May 1st, 2025 at 9:32pm MDT