

\$749,900 - 1 Horizon Link, Spruce Grove

\$749,900

Single Family on 0.00 Acres

Hilddowns, Spruce Grove, AB

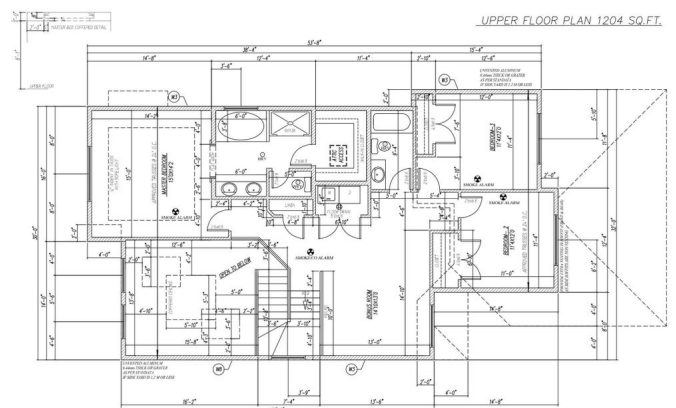
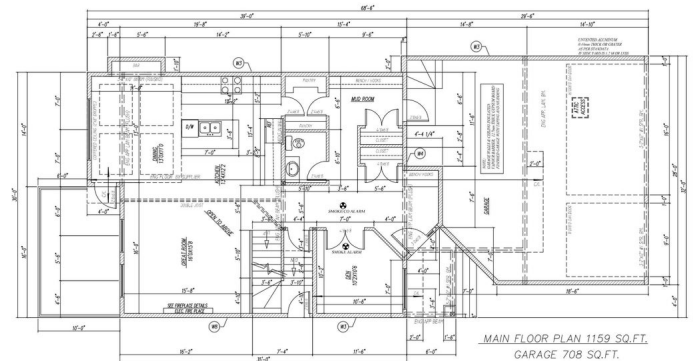
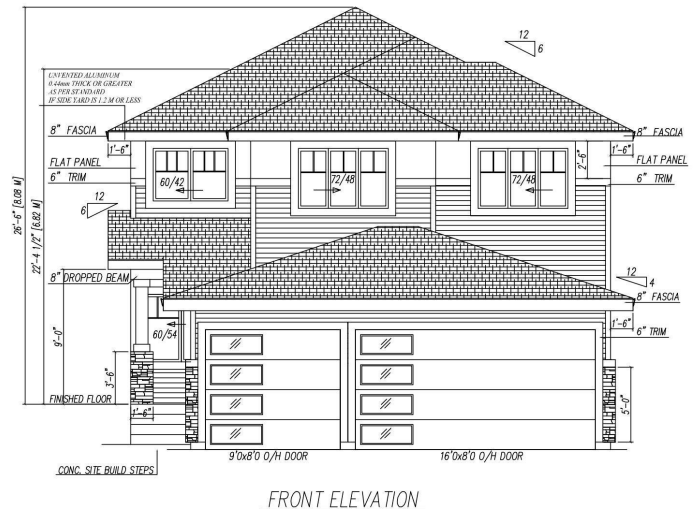
Built by Sunnyview Homes, this TRIPLE car garage property comes with high-end finishes. The bright, open-concept main floor features a versatile den, a modern powder room, open to below family room with a feature wall and electric fireplace. The gourmet kitchen boasts soft close ceiling height cabinets, quartz countertops, pull out spice racks, breakfast nook, walk-through pantry and a mudroom. Upstairs, a good sized bonus room overlooks the laundry room. The primary suite is a private retreat with a spa-like 5-piece ensuite and a spacious walk-in closet. Two additional generously sized bedrooms and a common bathroom complete this floor. The unfinished BSMT with SEPERATE SIDE offers endless potential for your personal touch. Premium lighting package, MDF shelving, gas lines, coffered ceilings and much more. *Please note that pictures are from a similar home constructed by the same builder. Actual home, fixtures, and finishes may vary. Minutes away from parks, shopping centers, and major roadways.

Built in 2025

Essential Information

MLS® # E4428600

Price	\$749,900
-------	-----------



Bedrooms	3
Bathrooms	2.50
Full Baths	2
Half Baths	1
Square Footage	2,363
Acres	0.00
Year Built	2025
Type	Single Family
Sub-Type	Detached Single Family
Style	2 Storey
Status	Active

Community Information

Address	1 Horizon Link
Area	Spruce Grove
Subdivision	Hilldowns
City	Spruce Grove
County	ALBERTA
Province	AB
Postal Code	T7X 0X5

Amenities

Amenities	Bar, Ceiling 10 ft., Ceiling 9 ft., Parking-Extra
Parking	Double Garage Attached, Tandem, Triple Garage Attached

Interior

Interior Features	ensuite bathroom
Appliances	Garage Control, Garage Opener, Hood Fan
Heating	Forced Air-1, Natural Gas
Fireplace	Yes
Fireplaces	Wall Mount
Stories	2
Has Basement	Yes
Basement	Full, Unfinished

Exterior

Exterior	Wood, Vinyl
Exterior Features	Airport Nearby, Golf Nearby, Playground Nearby, Public Transportation, Schools, Shopping Nearby

Roof	Asphalt Shingles
Construction	Wood, Vinyl
Foundation	Concrete Perimeter

Additional Information

Date Listed	April 2nd, 2025
Days on Market	35
Zoning	Zone 91

DATA IS DEEMED RELIABLE BUT IS NOT GUARANTEED ACCURATE BY THE REALTORS® ASSOCIATION OF EDMONTON. COPYRIGHT 2025 BY THE REALTORS® ASSOCIATION OF EDMONTON. ALL RIGHTS RESERVED.Trademarks are owned or controlled by the Canadian Real Estate Association (CREA) and identify real estate professionals who are members of CREA (REALTOR®, REALTORS®) and/or the quality of services they provide (MLS®, Multiple Listing Service®)

Listing information last updated on May 7th, 2025 at 3:02pm MDT