

# \$444,888 - 1351 Keswick Drive, Edmonton

MLS® #E4428386

**\$444,888**

3 Bedroom, 2.50 Bathroom, 1,280 sqft  
Single Family on 0.00 Acres

Keswick Area, Edmonton, AB

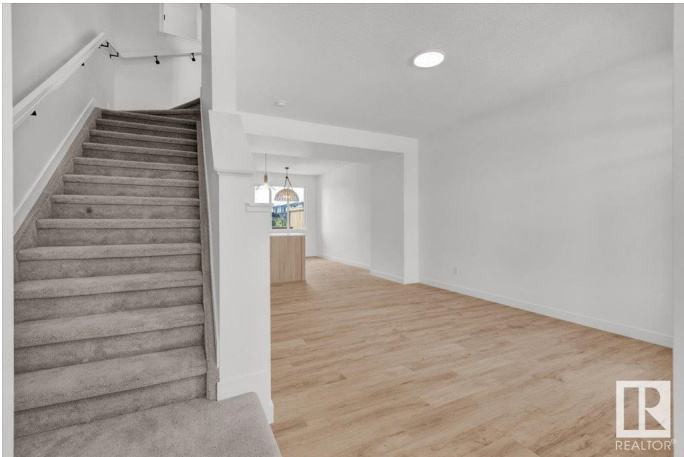
**QUICK POSSESSION & NO CONDO FEES!!**

Middle unit in a 4plex townhome located in the desirable Keswick community with a detached garage. Step inside to 9' ceilings on the main floor and an open-concept layout. The kitchen showcases light-toned cabinetry, 3m quartz countertops, sleek finishes, and a \$3,000 appliance allowance. Upstairs, you'll find a convenient laundry area, 4pc main bath, and 3 bedrooms including the primary suite with a walk-in closet and 4pc ensuite. This home is ideal for investing in your future! Close to walking trails, parks, and ponds. Under construction possession 35-45 after removal. Front & back landscaping included. Photos from a previous build & may differ; interior colors are represented, upgrades may vary appliances not included. HOA TBD.

Built in 2024

**Essential Information**

MLS® #	E4428386
Price	\$444,888
Bedrooms	3
Bathrooms	2.50
Full Baths	2
Half Baths	1
Square Footage	1,280
Acres	0.00



Year Built	2024
Type	Single Family
Sub-Type	Residential Attached
Style	2 Storey
Status	Active

### Community Information

Address	1351 Keswick Drive
Area	Edmonton
Subdivision	Keswick Area
City	Edmonton
County	ALBERTA
Province	AB
Postal Code	T6W 4V8

### Amenities

Amenities	Ceiling 9 ft., See Remarks
Parking	Double Garage Detached

### Interior

Interior Features	ensuite bathroom
Appliances	Garage Control, Garage Opener, See Remarks
Heating	Forced Air-1, Natural Gas
Stories	2
Has Basement	Yes
Basement	Full, Unfinished

### Exterior

Exterior	Wood, Vinyl
Exterior Features	Airport Nearby, Playground Nearby, Public Transportation, Schools, Shopping Nearby, Stream/Pond
Roof	Asphalt Shingles
Construction	Wood, Vinyl
Foundation	Concrete Perimeter

### Additional Information

Date Listed	April 1st, 2025
Days on Market	78
Zoning	Zone 56

HOA Fees 1

HOA Fees Freq. Annually

DATA IS DEEMED RELIABLE BUT IS NOT GUARANTEED ACCURATE BY THE REALTORS® ASSOCIATION OF EDMONTON. COPYRIGHT 2025 BY THE REALTORS® ASSOCIATION OF EDMONTON. ALL RIGHTS RESERVED. Trademarks are owned or controlled by the Canadian Real Estate Association (CREA) and identify real estate professionals who are members of CREA (REALTOR®, REALTORS®) and/or the quality of services they provide (MLS®, Multiple Listing Service®)

Listing information last updated on June 18th, 2025 at 7:02am MDT