

\$540,000 - 20 Eton Link, Spruce Grove

MLS® #E4420374

\$540,000

3 Bedroom, 2.50 Bathroom, 1,815 sqft
Single Family on 0.00 Acres

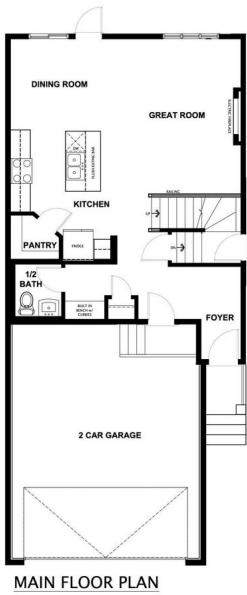
Easton, Spruce Grove, AB

This stunning 2-storey home features a double attached garage and an open-concept main floor, perfect for entertaining. The spacious living room boasts an electric fireplace, while the kitchen offers a corner pantry, an island with a breakfast bar, and plenty of storage. A convenient 2pc bath completes the main level. Upstairs, you'll find a large bonus room, laundry area, 4pc bath, and two bedrooms. The primary suite is a retreat with a walk-in closet and a luxurious 5pc ensuite, including dual sinks, a stand-up shower, and a soaker tub. A separate side entrance leads to the unfinished basement, offering endless potential. This home blends functionality and style for modern living.

Built in 2025

Essential Information

MLS® #	E4420374
Price	\$540,000
Bedrooms	3
Bathrooms	2.50
Full Baths	2
Half Baths	1
Square Footage	1,815
Acres	0.00
Year Built	2025



Type	Single Family
Sub-Type	Detached Single Family
Style	2 Storey
Status	Active

Community Information

Address	20 Eton Link
Area	Spruce Grove
Subdivision	Easton
City	Spruce Grove
County	ALBERTA
Province	AB
Postal Code	T7X 4B7

Amenities

Amenities	Ceiling 9 ft., Detectors Smoke, No Animal Home, No Smoking Home, Vinyl Windows
Parking	Double Garage Attached

Interior

Interior Features	ensuite bathroom
Appliances	Dishwasher-Built-In, Microwave Hood Fan, Refrigerator, Stove-Electric
Heating	Forced Air-1, Natural Gas
Fireplace	Yes
Fireplaces	Insert
Stories	2
Has Basement	Yes
Basement	Full, Unfinished

Exterior

Exterior	Wood, Stone, Vinyl
Exterior Features	Park/Reserve, Playground Nearby, Schools, Shopping Nearby
Roof	Asphalt Shingles
Construction	Wood, Stone, Vinyl
Foundation	Concrete Perimeter

Additional Information

Date Listed	February 4th, 2025
Days on Market	88

Zoning

Zone 91



DATA IS DEEMED RELIABLE BUT IS NOT GUARANTEED ACCURATE BY THE REALTORS® ASSOCIATION OF EDMONTON. COPYRIGHT 2025 BY THE REALTORS® ASSOCIATION OF EDMONTON. ALL RIGHTS RESERVED.Trademarks are owned or controlled by the Canadian Real Estate Association (CREA) and identify real estate professionals who are members of CREA (REALTOR®, REALTORS®) and/or the quality of services they provide (MLS®, Multiple Listing Service®)

Listing information last updated on May 3rd, 2025 at 4:02am MDT